

The Trouble WITH TINY TURTLES

While many people enjoy keeping pet reptiles, some are riskier than others. Here is what you need to know about pet turtles.



ANY TURTLE CAN CARRY GERMS

like *Salmonella* that can make people sick.

FACT



Salmonella often makes people sick with diarrhea for 4 to 7 days. But for some people, especially young children and older adults, *Salmonella* can cause severe illness and hospitalization.

FACT



People can get sick from *Salmonella* by touching turtles, their tank water, their supplies, or the areas where they live and roam.

FACT



You can't see germs like *Salmonella*. Turtles can look healthy and clean but still carry germs. These germs can spread to their tank water and things they touch.

TINY TURTLES ARE ESPECIALLY RISKY

and are illegal to sell as pets in the US



CDC investigates many *Salmonella* outbreaks linked to pet reptiles. Among these outbreaks, tiny turtles have caused the most illnesses. **In fact, the sale of tiny pet turtles has been banned in the US since 1975 because of the number of illnesses they cause and the risk to children.**

Although any turtle can carry germs, tiny turtles are especially risky because children are more likely to handle them and get sick.



IF YOU HAVE A PET TURTLE,

take steps to keep you and your family healthy.

FACT



Always wash your hands right after touching, feeding, or caring for your turtle and after cleaning its supplies.

FACT

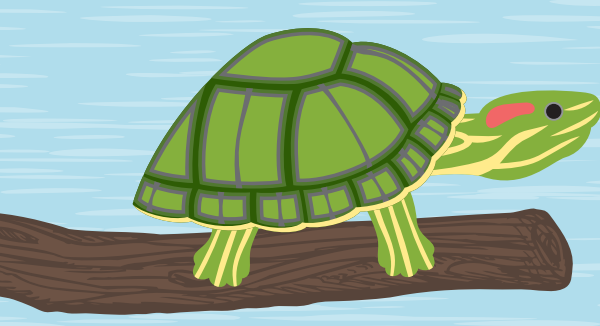


Clean your turtle tank and supplies while you are outside the house, if possible. If you clean indoors, use a laundry sink or a tub that is only used for your turtle. Don't clean supplies in the kitchen or other areas where you eat or prepare food.

FACT



Don't kiss or snuggle your turtle. This can spread germs to your mouth and make you sick.



If you want to rehome your turtle, don't toss it or release it into the wild! Call your local pet store or reptile rescue.

IF YOU ARE THINKING OF GETTING A PET TURTLE,

consider these tips.



A playing card is 3 1/2 inches long

Do not buy small turtles with shells less than 4 inches long. A federal law bans the sale of these turtles as pets. However, they are sometimes sold illegally at stores, flea markets, gift shops, and roadside stands.

Get your pet turtle from a reputable pet store or pet rescue. Reputable stores do not sell small turtles with shells less than 4 inches long.



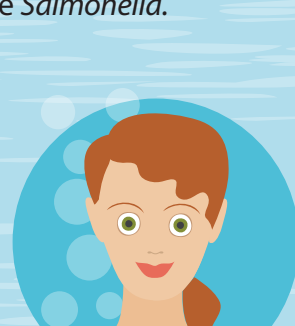
Turtles can be great pets, but they aren't right for every family. Consider picking a different pet if your household has someone who is at higher risk of getting severely sick from germs like *Salmonella*.



Kids under 5 years old



Adults 65 years and older



People with weakened immune systems

Find out more at www.cdc.gov/healthypets



U.S. Department of Health and Human Services
Centers for Disease Control and Prevention

