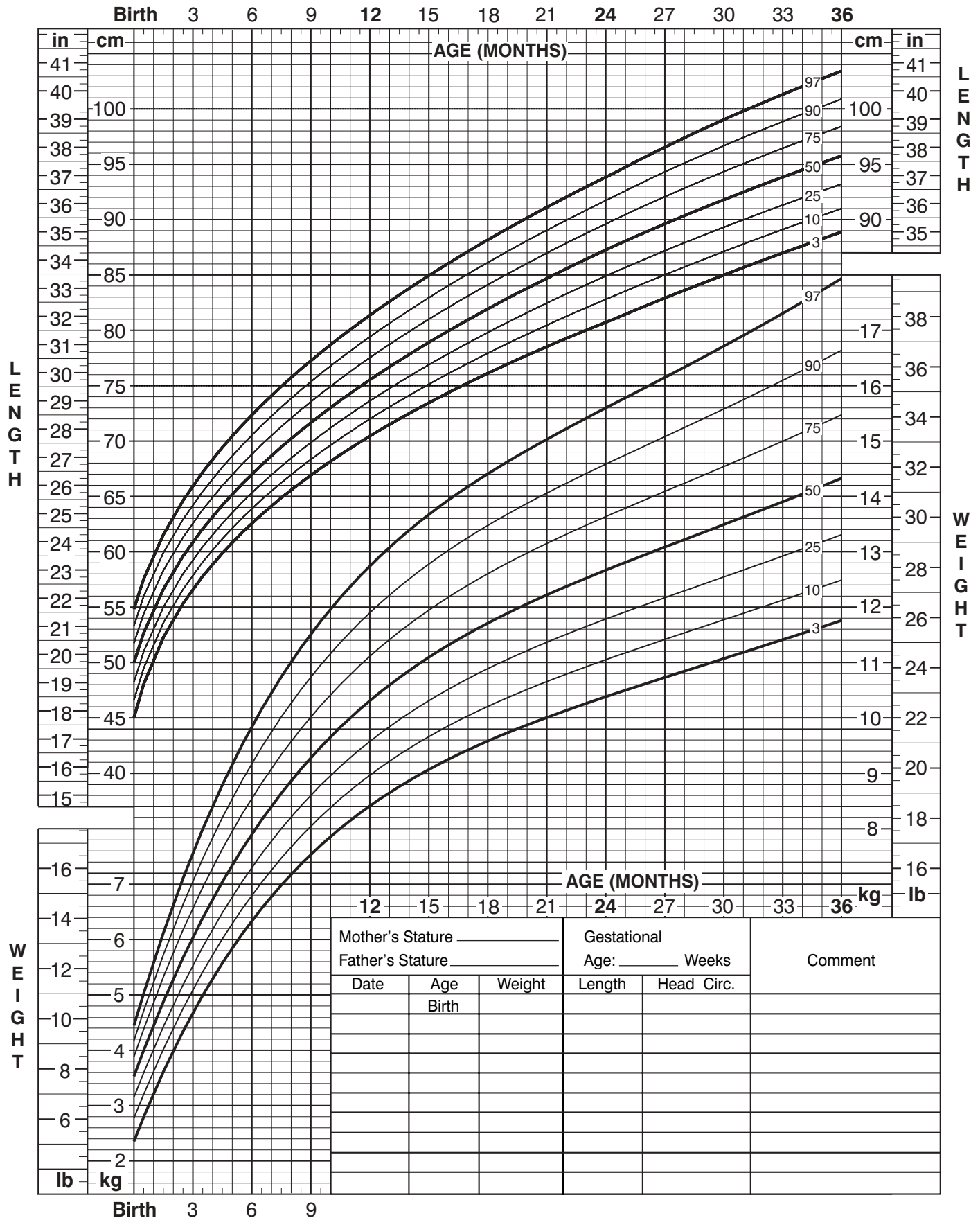


Birth to 36 months: Boys

Length-for-age and Weight-for-age percentiles

NAME _____

RECORD # _____



Published May 30, 2000 (modified 4/20/01).

SOURCE: Developed by the National Center for Health Statistics in collaboration with the National Center for Chronic Disease Prevention and Health Promotion (2000). <http://www.cdc.gov/growthcharts>

