



2021

Behavioral Risk Factor Surveillance System

Asthma Call-back Survey

Summary Data Quality Report



**National
Asthma
Control
Program**

Version 1.0.0
09/04/2023

ACKNOWLEDGMENTS

The Asthma Call-back Survey (ACBS) is funded by the National Asthma Control Program (NACP) in the Asthma and Air Quality Branch (AAQB) of the National Center for Environmental Health (NCEH). The state health departments jointly administer the ACBS with the National Center for Chronic Disease Prevention and Health Promotion (NCCDPHP), Division of Population Health (DPH).

The NCEH and NCCDPHP greatly appreciate the efforts of the BRFSS staff in each ACBS-participating state.

Hailay Desta Teklehaimanot, MD, MSc, DSc
Branch Chief
Asthma and Air Quality Branch
Division of Environmental Health Science and Practice
National Center for Environmental Health
Centers for Disease Control and Prevention
4770 Buford Hwy, NE
Mailstop S106-6
Atlanta, GA 30341 USA

E-mail: urr6@cdc.gov

Machell G. Town, PhD
Branch Chief
Population Health Surveillance Branch
Division of Population Health
National Center for Chronic Disease Prevention and Health Promotion
Centers for Disease Control and Prevention
4770 Buford Hwy, NE
Mailstop S107-6
Atlanta, GA 30341 USA

Phone: (770) 488-4681

E-mail: mpt2@cdc.gov

2021 Asthma Call-back Survey (ACBS) Summary Data Quality Report

Introduction

Procedures for interview disposition and response rates for the Behavioral Risk Factor Surveillance System (BRFSS) Asthma Call-back Survey (ACBS) follow the usual BRFSS procedures; however, some additions and adaptations are required for the call-back survey. Disposition codes, disposition code categories, and response rates are discussed in the sections below. Figure 1 is a flow chart that describes the eligibility paths BRFSS respondents with asthma follow through the ACBS process.

Because asthma characteristics vary by season, a seasonal analysis must consider any state for which interviewing was not conducted throughout the year. States may have interrupted interviewing due to contract interruptions with their data collection company. In addition, some ACBS interviews are finalized in the first few months of the next calendar year. If a state has less than 6 complete months of child or adult data, the data from that state are not considered sufficiently comparable with the data from other states and are excluded from the public release file and the response rate calculations. If a state has fewer than seventy-five (75) complete child interviews, reliable weights cannot be calculated and the child data from that state are excluded from the public release file. Also, if a state has fewer than two hundred (200) complete adult interviews, reliable weights cannot be calculated and the adult data for that state are excluded from the public release file.

Appendix A presents tables showing disposition code categories, response rates, and completed interviews by month for each state participating in the ACBS each year. Appendix B provides additional instructions on assigning the ACBS-specific disposition codes. Appendix C presents the ACBS nonresponse bias analysis plan and supporting tables showing demographic breakout and prevalence for each state. Details on BRFSS response rates and procedures can be found in the BRFSS Summary Data Quality Report for each survey year at [CDC - BRFSS Annual Survey Data](#).

Disposition Codes

The BRFSS disposition codes are used for the ACBS; however, a few additional codes are needed to account for situations specific to a call-back survey. In the list below, disposition codes added to the ACBS are underlined and bolded. There are no equivalent BRFSS codes for ACBS-specific codes. Detailed descriptions of the ACBS codes can be found in Appendix B.

The ACBS 4-digit disposition codes for 2021 are:

I. Eligible, contacted: complete interview

1100 Complete.

1200 Partial complete (through the end of section 8).

II. Eligible, contacted: refusal or termination

- 4413** Refused to participate in the call-back during the BRFSS interview.
- 2112** Refused to begin the ACBS interview after contacted.
- 2120** Terminated within the questionnaire during the ACBS interview before section 9.
- 2211** Refused to allow combining ACBS responses with BRFSS responses.
- 2212** Refused to answer the “ever had asthma” question during the ACBS interview.

III. Eligible, lost to follow-up because unable to contact or communicate with the BRFSS respondent with asthma

- 2111 Hang up or termination before respondent contacted. Household contacted but ACBS respondent not contacted.
- 2210 Selected respondent never reached or reached but did not begin interview during interviewing period. Selected respondent away from residence during the entire interviewing period.
- 2220 Telephone answering device, message confirming private residential status. Telecommunication technological barrier, message confirming private residential status.
- 2320 Selected respondent physically or mentally unable to complete an interview during the entire interviewing period.
- 2330 Language problem after respondent selection.
- 3100 Contact, hang-up or termination, unknown if private residence.
- 3130 No answer.
- 3140 Telephone answering device, unknown if private residence.
- 3200 Hang-up or termination, known household. Household contact, eligibility undetermined.
- 3322 Physical or mental impairment.
- 3330 Language problem.
- 4100 Household members away from residence during entire interviewing period.
- 4900 Miscellaneous, non-eligible (for ACBS miscellaneous non-contact).
- 4306** Selected ACBS respondent no longer living in the BRFSS household.

Temporary codes: should be resolved prior to submission

- 5050 Hang-up, unknown if housing unit.
- 5100 Appointment.
- 5111 Household-level refusal.
- 5112 Refusal: hang-up or termination.
- 5120 Break off/termination in questionnaire before Section 9.
- 5130 No answer.
- 5140 Answering machine, unknown if private residence.
- 5220 Answering machine, message confirming residential status.
- 5320 Physical or mental impairment.

- 5330 Language problem.
- 5550 Busy.
- 5560 Unsafe location for interview.

IV. Eligible, lost to follow-up for technical reasons

- 3150 Telecommunication technological barrier, unknown if private residence.
- 3700 On never-call list.
- 4200 Dedicated fax/data/modem line with no human contact.
- 4300 Telephone number no longer in service or changed. Non-working/disconnected number.
- 4400 Busy/Fast busy/Circuit busy.
- 4430 Call forwarding/Pager.
- 4450 Landline sample number connects to cell phone.
- 4460 Cell phone sample number connects to landline.
- 4470 Cell phone respondent also has landline, less than 90% of all calls on cell phone.
- 4500 Not a private residence – business.
- 4510 Not a private residence – group home.
- 5150 Technological barrier other than answering machine–unknown if private residence.
- 5200 Fax/Data/Modem.
- 5300 Phone number temporarily out of service. Possible non-working number.
- 5400 Technological barrier other than answering machine with message confirming residential status. Fast busy. Circuit busy.
- 5599 Mistaken Ctrl-End.
- 5700 Supervisor attention needed.
- 5900 Null attempt.
- 9999** Missing disposition code.

V. Ineligible: all codes specific to ACBS (no BRFSS equivalent)

- 2290** Most-knowledgeable person is not parent or guardian.
- 2291** No parent or legal guardian in the household (child ineligible).
- 4480** Not recruited for call-back at BRFSS interview (excluded by state).
- 4490** Random child/adult selection: adult ineligible, child selected.
- 4491** Random child/adult selection: child ineligible, adult selected.
- 4405** Out-of-state when ACBS records are not transferred to state of residence.
- 4700** Household, no eligible respondent (respondent does not have asthma).
- 4411** Selected respondent not eligible for follow-up.
- 4412** Transferred from BRFSS but not attempted (excluded by state).
- 4471** Misdiagnosed asthma in respondent.

Definitions and Labels for Disposition Code Categories

Because the ACBS is a call-back interview, all those identified with asthma at the BRFSS interview are, with a few notable exceptions, eligible for the call-back survey. The ACBS eligibility flow chart (Figure 1) summarizes how BRFSS respondents are categorized for ACBS response rate calculation.

ACBS interviews are considered complete (COIN) if the respondents finish the entire interview or if they complete through section 8 of the ACBS interview. ACBS interviews are refusals if the respondent refuses participation at either the BRFSS interview or at the time of the ACBS interview. Terminations are ACBS interviews that start but are terminated during the interview before completing section 8 (Medication Section).

The disposition codes that relate to contact problems or technology issues are considered “eligible but lost to follow-up.” If they had been contacted, a small proportion of those eligible but lost to follow-up might have been ineligible.

BRFSS respondents with asthma who are considered ineligible for the ACBS include those who are not asked to participate at the time of the BRFSS interview. Each year, between 10% and 15% of those technically eligible are not asked to participate in the call-back survey.

Respondents might not be asked for several reasons:

- States with split samples may include respondents in the call-back only if they are in specified splits of the BRFSS sample. Counts for states that exclude split-sample respondents are excluded from the following tables and rate calculations.
- The BRFSS respondent may partially complete the BRFSS interview but terminate before the call-back request.
- Specific state BRFSS call-back contracts may limit the number of call-back interviews due to budgetary constraints.
- States may stop conducting call-back interviews during contract negotiations.

BRFSS respondents with asthma who are asked to participate in the ACBS but are later classified as ineligible include:

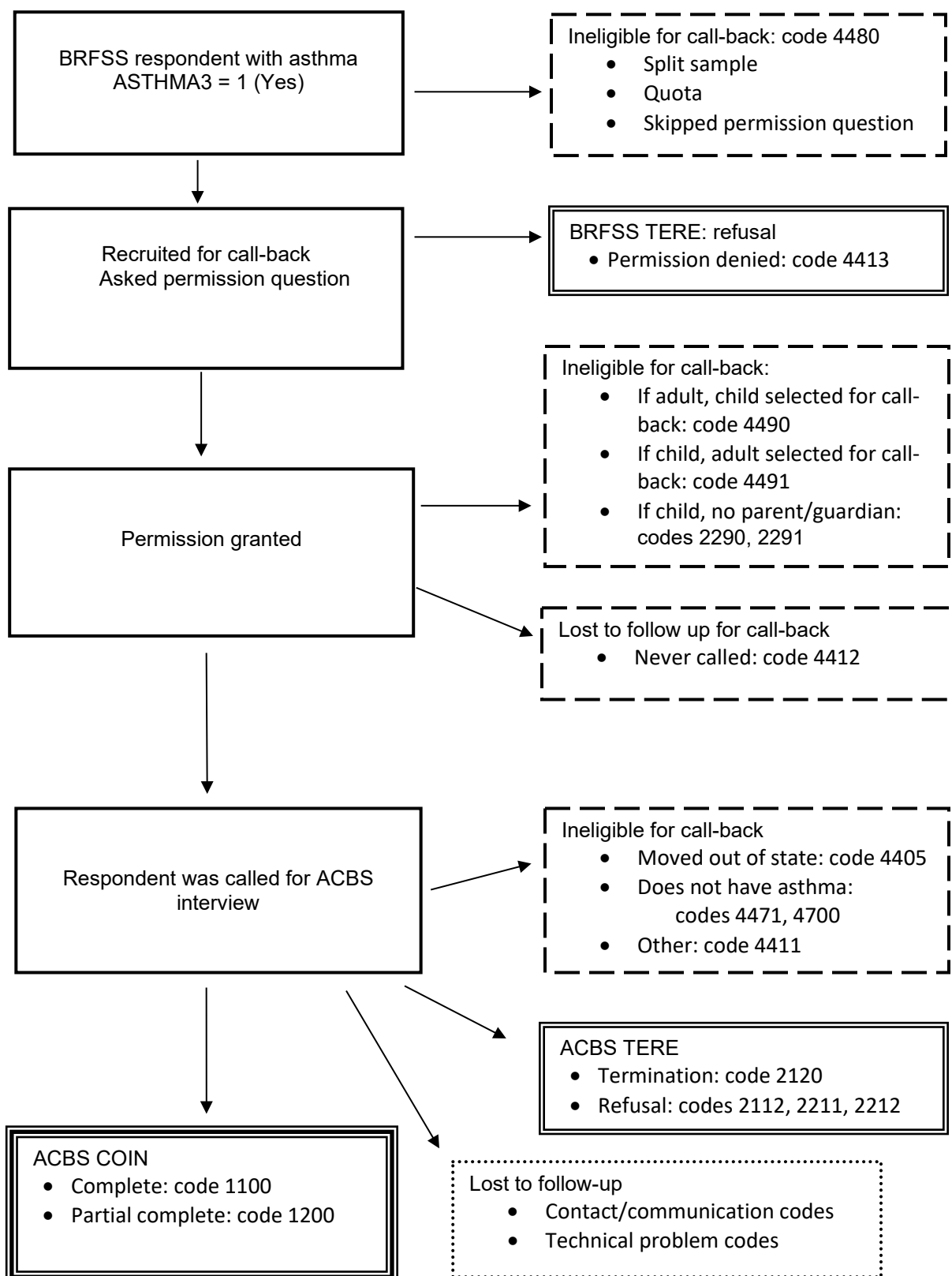
- Respondents in households where both the selected adult and selected child in the household have asthma. When both have asthma, only one is eligible for the ACBS.
- Respondents who move out-of-state between the BRFSS interview and the ACBS interview in states that are not transferring ACBS interview data or to/from states not participating in the ACBS.
- Respondents who indicate, at the time of the ACBS interview, that the reported diagnosis of asthma was an error.
- Child respondents for whom the adult BRFSS respondent is not the child’s parent or guardian.
- Some respondents in states that have reached a pre-specified quota for ACBS interviews.

The following table indicates how disposition codes are grouped into response rate categories shown in the eligibility flow chart (Figure 1):

Table 1: Disposition Code Categories

Category	Disposition Codes	Notes
Eligible COIN Completed interview	1100, 1200	Through section 8
Eligible TERE Terminations and refusals	<u>4413</u>	At BRFSS interview
	<u>2112, 2120, 2211, 2212,</u>	At ACBS
Eligible, lost to follow-up Not interviewed	2111, 2210, 2220, 2320, 2330, 3100, 3130, 3140, 3200, 3322, 3330, 4100, 4900, <u>4306,</u> 5050, 5100, 5111, 5112, 5120, 5130, 5140, 5220, 5320, 5330, 5550, 5560	Unable to contact or communicate with eligible respondent
	3150, 3700, 4200, 4300, 4400, 4430, 4450, 4460, 4470, 4500, 4510, 5400, 5150, 5200, 5300, 5599, 5700, 5900, <u>9999</u>	Technical problems
Ineligible	<u>2290, 2291, 4480, 4490, 4491</u>	At BRFSS interview
	<u>4405, 4700, 4411, 4471</u>	At ACBS
	<u>4412</u>	No ACBS attempt

Figure 1: ACBS Eligibility Flow Chart:



ACBS Response Rates

The ACBS Interview Completion Rate is the proportion of completed interviews among eligible respondents who are contacted for and started the ACBS interview. Those who refuse at the initial BRFSS interview (4413), are ineligible, and those never contacted are excluded from the denominator. This rate is based on actual contacts with the eligible respondents at the time of the call-back interview. The numerator of the rate includes completed interviews (COIN). The denominator of the rate includes completed interviews (COIN), plus the number contacted later for the ACBS interview who refused or terminated the interview (disposition codes 2112, 2120, 2211, and 2212).

The ACBS Cooperation Rate is the proportion of completed interviews among all eligible respondents who are recruited and contacted for the ACBS interview. Eligible respondents who refuse the call-back at the time of the BRFSS interview are included. Non-contacts are excluded from the denominator, but contacts with communication problems specific to the respondent with asthma are included. The numerator of the rate consists of completed interviews (COIN). The denominator of the rate includes completed interviews (COIN), plus refusals and terminations (TERE), plus the number of non-interviews that involved language problems with the respondent with asthma (2330) or physical/mental impairment of the respondent with asthma (2320). A Cooperation Rate below sixty-five percent (65%) may indicate some problem with interviewing techniques.

The Refusal Rate is the percentage of all eligible respondents who refuse to be interviewed or terminate an interview early in the questionnaire. The numerator includes terminations and refusals (TERE). The denominator is the same as for the CASRO rate (below). The denominator includes completed interviews (COIN), terminations and refusals (TERE), and a proportion of those eligible, but lost to follow-up. The proportion represents an estimate of the number of those lost to follow-up who would be expected to remain eligible if they had been contacted. The proportion of cases lost to follow-up that are estimated to be eligible is the same as the proportion of cases not lost to follow-up that are eligible. A Refusal Rate above thirty-five percent (35%) indicates some problem with interviewing techniques.

The Council of American Survey Research Organizations (CASRO) rate is a measure of respondent cooperation and is generally defined as the proportion of all eligible respondents in the sample for whom an interview has been completed. The numerator of the CASRO rate includes completed interviews (COIN). The denominator includes completed interviews (COIN), terminations and refusals (TERE), and a proportion of those eligible, but lost to follow-up. The proportion represents an estimate of the number of those lost to follow-up who would be expected to remain eligible if they had been contacted. The proportion of cases lost to follow-up that are estimated to be eligible is the same as the proportion of cases not lost to follow-up that are eligible. A CASRO rate below forty percent (40%) should be cause for a review of data collection practices that could affect it, especially sample management and interviewer recruitment, retention, training, supervision, and monitoring.

ACBS Response rate formulae are specified below. ACBS response rate tables, including response rates for each state/area participating in the ACBS, can be found in Appendix A. Details on ACBS-specific disposition codes can be found in Appendix B.

Response Rate Formulae for the ACBS

ACBS Interview Completion Rate:

$$\frac{1100 + 1200}{1100 + 1200 + \underline{2112} + \underline{2120} + \underline{2211} + \underline{2212}}$$

ACBS Cooperation Rate:

$$\frac{1100 + 1200}{1100 + 1200 + \underline{2112} + \underline{2120} + \underline{2211} + \underline{2212} + \underline{4413} + 2320 + 2330}$$

ACBS CASRO Rate:

$$\frac{1100 + 1200}{[1100 + 1200 + \underline{2112} + \underline{2120} + \underline{2211} + \underline{2212} + \underline{4413}] + P * [\text{Eligible lost}]}$$

ACBS Refusal Rate:

$$\frac{\underline{2112} + \underline{2120} + \underline{2211} + \underline{2212} + \underline{4413}}{[1100 + 1200 + \underline{2120} + \underline{2211} + \underline{2212} + \underline{2112} + \underline{4413}] + P * [\text{Eligible lost}]}$$

Where:

P (Proportion) = (COIN + ACBS TERE) / (COIN + ACBS TERE + Ineligible)

$$\frac{[(1100+1200) + (\underline{2112} + \underline{2120} + \underline{2211} + \underline{2212})]}{[(1100+1200) + (\underline{2112} + \underline{2120} + \underline{2211} + \underline{2212}) + \underline{4405} + \underline{4700} + \underline{4411} + \underline{4471} + \underline{2291} + \underline{2290} + \underline{4480} + \underline{4490} + \underline{4491} + \underline{4412}]}$$

Eligible lost = 2111, 2210, 2220, 2320, 2330, 3100, 3130, 3140, 3200, 3322, 3330, 4100, 4900, 4306, 5050, 5100, 5111, 5112, 5120, 5130, 5140, 5220, 5320, 5330, 5550, 5560, 3150, 3700, 4200, 4300, 4400, 4430, 4450, 4460, 4470, 4500, 4510, 5400, 5150, 5200, 5300, 5599, 5700, 5900, 5999

ACBS Nonresponse Bias

The ACBS uses post-stratification weighting to ensure the sample conforms to the state estimated asthma population with respect to geography, age, sex, race, ethnicity, and other characteristics. Nonresponse bias, however, cannot be completely removed. In order to communicate the potential impact of nonresponse bias on the ACBS analysis results, in Appendix C two groups of tables are being provided (see Appendix C). The first group of tables presents ACBS unweighted frequencies for respondents, non-respondents, and BRFSS-eligible asthma respondents by age, sex, and race/ethnicity demographic categories for each state. The second group of tables report current asthma prevalence (Appendix C). ACBS respondents are those respondents who completed or partially completed the interview. Nonresponse for the ACBS is influenced by eligible BRFSS respondents for which no interview was conducted such as: (1) refusals, terminations, and non-consent; (2) lost to follow-up due to non-contact or communication; and (3) lost to follow-up due to technological circumstances. BRFSS-eligible respondents are individuals on the BRFSS survey who answered, “Yes” to the question, “Has a doctor, nurse, or other health professional EVER told you that you had asthma?” A respondent is classified as current prevalence if he or she also responded “Yes” to the question: “Do you still have asthma?”

Appendix A:

List of Tables in the 2021 BRFSS ACBS Summary Data Quality Report

Landline and Cell Phone Samples

Table 1.1 ACBS 2021 Disposition Categories by State/Territory: Adult Landline and Cell Phone Sample

Table 1.2 ACBS 2021 Disposition Categories by State/Territory: Child Landline and Cell Phone Sample

Table 2.1 ACBS 2021 Response Rates by State/Territory: Adult Landline and Cell Phone Sample

Table 2.2 ACBS 2021 Response Rates by State/Territory: Child Landline and Cell Phone Sample

Table 3.1 ACBS 2021 Completed Interviews by State/Territory and Month: Adult Landline and Cell Phone Sample

Table 3.2 ACBS 2021 Completed Interviews by State/Territory and Month: Child Landline and Cell Phone Sample

Note:

In this document, the term "state" is used to refer to all areas participating in the ACBS.

Table 1.1 ACBS 2021 Disposition Categories by State/Territory: Adult Landline Cell Phone Sample

State	BRFSS Asthma	Ineligible Not Recruited		Recruited for Call-back				Ineligible		Total Called	Eligible				Ineligible
				Refused BRFSS TERE		Agreed		Child Selected	Never Called		COIN	ACBS TERE	Lost to Follow up		
													Contact	Technical	
Arizona*	1525	249	16%	344	23%	932	61%	0	432	500	362	27	100	11	0
California	836	115	14%	257	31%	464	56%	0	32	432	226	1	197	5	3
Connecticut	1235	242	20%	182	15%	811	66%	0	32	779	499	50	216	10	4
Florida	798	179	22%	102	13%	517	65%	0	4	513	345	54	110	2	2
Georgia	1042	222	21%	164	16%	656	63%	0	17	639	344	39	205	43	8
Hawaii	1010	126	12%	327	32%	557	55%	0	24	533	245	11	273	3	1
Indiana	1389	322	23%	150	11%	917	66%	0	10	907	678	106	108	7	8
Iowa*	1094	150	14%	277	25%	667	61%	0	31	636	400	22	207	6	1
Kansas	2347	156	7%	560	24%	1631	69%	0	77	1554	593	52	794	95	20
Kentucky	785	53	7%	253	32%	479	61%	0	28	451	201	25	207	14	4
Maine	1833	124	7%	590	32%	1119	61%	0	85	1034	524	24	461	22	3
Maryland	2112	1335	63%	83	4%	694	33%	0	3	691	521	47	111	6	6
Massachusetts	1114	68	6%	376	34%	670	60%	0	80	590	337	10	225	14	4
Michigan	1334	261	20%	149	11%	924	69%	0	4	920	707	94	104	6	9
Minnesota	1944	444	23%	337	17%	1163	60%	0	35	1128	679	69	329	51	0
Missouri	1523	97	6%	409	27%	1017	67%	0	75	942	487	18	390	39	8
Montana	845	70	8%	191	23%	584	69%	0	68	516	217	25	248	18	8
Nebraska	1542	152	10%	399	26%	991	64%	0	38	953	494	48	384	6	21
New Hampshire	985	172	17%	104	11%	709	72%	0	6	703	545	65	78	6	9
New Jersey	976	252	26%	85	9%	639	65%	0	30	609	451	60	86	7	5
New Mexico	885	77	9%	282	32%	526	59%	0	20	506	278	25	191	8	4
New York**	1856	462	25%	165	9%	1229	66%	0	42	1187	858	132	162	17	18
Ohio	1939	580	30%	391	20%	968	50%	0	147	821	545	37	211	28	0
Oregon*	813	71	9%	207	25%	535	66%	0	5	530	297	16	198	18	1
Pennsylvania	874	88	10%	261	30%	525	60%	0	13	512	246	21	233	11	1
Rhode Island	909	154	17%	73	8%	682	75%	0	7	675	485	55	129	2	4
Texas	1317	235	18%	214	16%	868	66%	0	25	843	511	42	270	17	3
Utah	1481	148	10%	426	29%	907	61%	0	62	845	500	19	308	14	4
Vermont	1007	177	18%	74	7%	756	75%	0	4	752	563	83	95	4	7
Wisconsin	792	130	16%	113	14%	549	69%	0	43	506	387	30	74	3	12
Total	38142	6911	18%	7545	20%	23686	62%	0	1479	22207	13525	1307	6704	493	178

Notes:

* States that did not collect child data: Arizona, Iowa, and Oregon

**States only included in version 3 of sample split: New York

Table 1.2 ACBS 2021 Disposition Categories by State/Territory: Child Landline and Cell Phone Sample

State	BRFSS Asthma	Ineligible Not Recruited	Recruited for Call-back					Ineligible		Total Called	Eligible				Ineligible
			Refused BRFSS TERE	Agreed	Child Selected	Never Called	COIN	ACBS TERE	Lost to Follow-up						
									Contact		Technical				
States included in public release file because of more than 75 completes															
Connecticut	227	16	7.05%	28	12.33%	183	80.62%	0	0	182	88	17	71	4	2
Indiana	210	15	7.14%	20	9.52%	175	83.33%	0	0	175	94	28	41	9	3
Michigan	193	10	5.18%	25	12.95%	158	81.87%	0	0	148	87	24	37	0	0
Minnesota	326	58	17.79%	45	13.80%	223	68.40%	0	0	177	104	13	53	7	0
Missouri	266	38	14.29%	45	16.92%	183	68.80%	0	0	175	85	3	82	4	1
New York*	246	12	4.88%	13	5.28%	221	89.84%	0	6	215	124	34	49	6	2
Texas	249	9	3.61%	32	12.85%	208	83.53%	0	0	208	95	15	89	9	0
Utah	335	45	13.43%	85	25.37%	205	61.19%	0	2	183	90	3	87	2	1
Vermont	151	7	4.64%	8	5.30%	136	90.07%	0	0	127	86	11	23	6	1
States excluded from public release file because of less than 75 completes															
California	127	10	7.87%	40	31.50%	77	60.63%	0	6	52	24	0	26	1	1
Florida	94	6	6.38%	10	10.64%	78	82.98%	0	0	68	42	13	11	2	0
Georgia	177	7	3.95%	32	18.08%	138	77.97%	0	0	138	63	13	47	12	3
Hawaii	178	29	16.29%	43	24.16%	106	59.55%	0	0	90	37	0	53	0	0
Kansas	489	52	10.63%	107	21.88%	330	67.48%	0	13	245	60	4	148	29	4
Kentucky	103	16	15.53%	19	18.45%	68	66.02%	0	0	55	13	8	50	2	2
Maine**	205	0	0.00%	55	26.83%	150	73.17%	0	43	97	40	1	52	3	1
Maryland	369	190	51.49%	19	5.15%	160	43.36%	0	0	146	74	25	46	1	0
Massachusetts	181	2	1.10%	58	32.04%	121	66.85%	0	10	111	50	2	58	0	1
Montana	103	12	11.65%	24	23.30%	67	65.05%	0	0	67	12	3	32	1	3
Nebraska	248	31	12.50%	32	12.90%	185	74.60%	0	8	160	68	13	73	2	4
New Hampshire	107	1	0.93%	10	9.35%	96	89.72%	0	8	87	58	14	15	0	0
New Jersey	151	7	4.64%	19	12.58%	125	82.78%	0	8	125	61	34	38	4	1
Ohio	264	47	17.80%	63	23.86%	154	58.33%	0	8	101	56	13	30	2	0
Pennsylvania	144	24	16.67%	36	25.00%	84	58.33%	0	8	69	25	8	34	2	0
Rhodes Island	138	5	3.62%	5	3.62%	128	92.75%	0	8	117	72	13	31	1	0
Wisconsin	117	21	17.95%	12	10.26%	84	71.79%	0	8	79	49	2	25	0	3
Total	5398	670	12.41%	885	16.39%	3843	71.19%	0	136	3397	1657	314	1301	109	33

Note:

States that did not collect child data: Arizona, Iowa, and Oregon

*State only included in version 3 of sample split: New York

**Maine only collected data on current asthma and will be excluded from public-release file

Table 2.1 ACBS 2021 Response Rates by State/Territory: Adult Landline and Cell Phone Sample

STATE	COMPLETION RATE	COOPERATION RATE	REFUSAL RATE	CASRO RATE
Arizona*	93%	49%	48%	47%
California	100%	47%	43%	37%
Connecticut	91%	68%	26%	57%
Florida	86%	69%	27%	60%
Georgia	90%	63%	29%	49%
Hawaii	96%	42%	45%	32%
Indiana	86%	72%	25%	67%
Iowa*	95%	57%	35%	47%
Kansas	92%	49%	33%	32%
Kentucky	89%	42%	43%	31%
Maine	96%	46%	41%	35%
Maryland	92%	80%	19%	76%
Massachusetts	97%	47%	43%	38%
Michigan	88%	74%	24%	69%
Minnesota	91%	63%	31%	52%
Missouri	96%	53%	35%	40%
Montana	90%	50%	36%	36%
Nebraska	91%	52%	37%	40%
New Hampshire	89%	76%	22%	70%
New Jersey	88%	75%	22%	69%
New Mexico	92%	47%	42%	38%
New York**	87%	74%	23%	67%
Ohio	94%	56%	40%	50%
Oregon*	95%	57%	32%	43%
Pennsylvania	92%	47%	40%	35%
Rhode Island	90%	79%	18%	68%
Texas	92%	66%	27%	53%
Utah	96%	53%	38%	43%
Vermont	87%	78%	20%	71%
Wisconsin	93%	73%	25%	66%
TOTAL	91.00%	60.00%	33.00%	50.00%

Notes:

* States that did not collect child data: Arizona, Iowa, and Oregon

**States only included in version 3 of sample split: New York

Table 2.2 ACBS 2021 Response Rates by State/Territory: Child Landline and Cell Phone Sample				
State	Completion Rate	Cooperation Rate	Refusal Rate	Casro Rate
States included in public release file because of more than 75 completes				
Connecticut	84%	64%	23%	45%
Indiana	77%	66%	26%	51%
Michigan	78%	64%	29%	52%
Minnesota	89%	64%	30%	54%
Missouri	97%	64%	25%	45%
New York*	78%	71%	21%	45%
Texas	86%	65%	20%	41%
Utah	97%	51%	38%	39%
Vermont	89%	81%	15%	66%
States excluded from public release file because of less than 75 completes				
California	100%	38%	53%	32%
Florida	76%	64%	31%	56%
Georgia	83%	58%	28%	39%
Hawaii	100%	46%	41%	36%
Kansas	94%	35%	49%	27%
Kentucky	62%	33%	51%	25%
Maine**	98%	42%	47%	33%
Maryland	75%	62%	33%	55%
Massachussets	96%	45%	38%	32%
Montana	80%	30%	54%	24%
Nebraska	84%	60%	29%	44%
New Hampshire	81%	71%	25%	61%
New Jersey	74%	58%	29%	44%
Ohio	81%	42%	52%	39%
Pennsylvania	76%	36%	51%	29%
Rhode Island	85%	77%	15%	62%
Wisconsin	96%	78%	18%	62%
Total	85%	58%	32%	45%
Notes:				
States that did not collect child data: Arizona, Iowa, and Oregon				
*State only included in version 3 of sample split: New York				
**Maine only collected data on current asthma and will be excluded from public-release file				

Table 3.1 ACBS 2021 Completed Interviews by State/Territory and Month: Adult Landline and Cell Phone Sample

STATE	2021												2022				TOTAL
	2021JAN	2021FEB	2021MAR	2021APR	2021MAY	2021JUN	2021JUL	2021AUG	2021SEP	2021OCT	2021NOV	2021DEC	2022JAN	2022FEB	2022MAR	2022APR	
Arizona*	.	.	.	18	31	59	102	53	4	26	10	59	362
California	.	.	.	30	23	19	10	36	18	31	28	18	13	.	.	.	226
Conneticut	.	55	64	47	25	24	27	21	20	25	51	108	32	.	.	.	499
Florida	.	.	.	2	64	179	99	1	.	.	345
Georgia	.	32	59	21	41	19	26	23	29	6	46	36	6	.	.	.	344
Hawaii	.	31	23	15	12	9	23	23	14	9	22	30	25	9	.	.	245
Indiana	.	20	58	75	69	116	72	61	21	40	56	50	40	.	.	.	678
Iowa*	30	31	26	26	27	47	42	45	22	25	42	35	2	.	.	.	400
Kansas	72	4	85	114	44	69	64	54	57	30	.	.	593
Kentucky	32	24	9	15	13	28	28	22	14	6	4	6	201
Maine	.	.	109	51	30	19	30	68	40	64	71	42	524
Maryland	5	86	29	29	29	56	72	63	66	35	23	25	3	.	.	.	521
Massachusetts	26	22	21	19	36	38	36	52	35	23	14	15	337
Michigan	.	35	95	46	33	47	53	61	75	117	67	59	19	.	.	.	707
Minnesota	29	61	85	71	57	51	32	56	49	28	53	47	60	.	.	.	679
Missouri	.	45	29	41	32	39	36	25	15	64	49	5	25	66	16	.	487
Montana	.	.	24	38	11	.	15	.	38	37	3	43	8	.	.	.	217
Nebraska	.	.	.	37	105	50	26	76	28	17	41	33	25	56	.	.	494
New Hampshire	2	47	72	67	34	56	26	23	33	68	71	43	3	.	.	.	545
New Jersey	.	37	48	38	31	20	48	48	39	34	29	49	30	.	.	.	451
New Mexico	.	.	47	24	17	17	19	21	26	26	26	16	39	.	.	.	278
New York**	4	51	85	40	70	109	75	106	126	98	32	32	30	.	.	.	858
Ohio	14	60	49	54	50	69	39	64	9	2	22	30	83	.	.	.	545
Oregon*	10	37	29	16	9	24	19	22	28	20	37	46	297
Pennsylvania	80	25	19	35	9	21	8	19	22	8	.	.	246
Rhode Island	7	60	45	26	26	27	44	30	38	53	48	68	13	.	.	.	485
Texas	2	41	104	110	45	51	37	4	35	10	19	31	21	1	.	.	511
Utah	.	20	37	32	37	29	37	36	47	38	63	55	66	3	.	.	500
Vermont	11	32	38	81	31	30	57	62	37	68	62	43	11	.	.	.	563
Wisconsin	9	33	58	33	23	25	17	52	30	32	21	28	19	7	.	.	387
STATE TOTAL RELEASE	149	836	1234	1093	1120	1110	1159	1304	992	1116	1173	1326	771	193	41	6	13623

Notes:

* States that did not collect child data: Arizona, Iowa, and Oregon

**States only included in version 3 of sample split: New York

Table 3.2 ACBS 2021 Completed Interviews by State/Territory and Month: Child Landline and Cell Phone Sample																
STATE	2021												2022			TOTAL
	2021JAN	2021FEB	2021MAR	2021APR	2021MAY	2021JUN	2021JUL	2021AUG	2021SEP	2021OCT	2021NOV	2021DEC	2022JAN	2022FEB	2022MAR	
States included in public release file because of more than 75 completes																
Connecticut	.	14	10	5	4	3	6	1	1	12	4	21	7	.	.	88
Indiana	.	5	5	10	12	14	13	4	2	8	7	9	5	.	.	94
Michigan	.	3	9	5	4	5	9	6	17	13	7	5	3	.	.	86
Minnesota	4	16	17	13	7	5	4	3	8	4	10	6	7	.	.	104
Missouri	.	1	6	10	3	6	9	5	3	18	10	1	3	7	3	85
New York*	.	10	16	5	14	10	10	11	11	18	4	6	8	.	.	123
Texas	.	5	16	22	11	9	5	.	2	6	4	3	10	.	.	93
Utah	.	5	5	4	11	3	7	7	2	10	13	9	13	2	.	91
Vermont	3	5	7	16	7	3	5	10	5	8	6	8	3	.	.	86
States excluded from public release file because of less than 75 completes																
California	.	.	.	1	.	2	.	1	4	4	5	4	3	.	.	24
Florida	4	15	21	2	.	42
Georgia	.	6	9	4	2	3	4	1	10	11	7	4	1	.	.	62
Hawaii	.	2	6	2	5	3	3	2	4	.	2	3	5	.	.	37
Kansas	9	1	8	13	4	7	8	2	5	3	.	60
Kentucky	3	2	1	.	.	2	2	.	2	1	.	13
Maine**	.	.	6	4	4	4	5	1	7	2	6	1	.	.	.	40
Maryland	1	19	3	8	2	3	13	7	10	6	1	1	.	.	.	74
Massachusetts	5	3	3	7	6	6	5	2	6	2	2	3	.	.	.	50
Montana	.	.	.	5	.	.	2	.	2	.	.	3	.	.	.	12
Nebraska	.	.	.	3	21	3	11	6	2	1	11	3	2	5	.	68
New Hampshire	1	5	7	7	4	6	4	2	6	2	6	7	.	.	.	57
New Jersey	.	2	3	2	11	4	5	6	4	7	5	8	4	.	.	61
Ohio	2	4	7	4	4	11	6	6	.	.	1	4	7	.	.	56
Pennsylvania	11	2	2	3	1	3	.	2	.	1	.	25
Rhode Island	.	8	8	4	7	3	6	7	5	15	4	3	1	.	.	71
Wisconsin	.	7	6	6	5	1	2	3	5	2	1	7	3	1	.	49
STATE TOTAL RELEASE	16	120	149	147	167	112	145	107	121	161	130	138	113	22	3	1651
Notes:																
*State only included in version 3 of sample split: New York																
**Maine only collected data on current asthma and will be excluded from public-release file																
States that did not collect child data: Arizona, Iowa, and Oregon																
Child states not included in public release file: California, Florida, Georgia, Hawaii, Kansas, Kentucky, Maine, Maryland, Massachusetts, Montana, Nebraska, New Hampshire, New Jersey, Ohio, Pennsylvania, Rhode Island, Wisconsin																

Appendix B: Instructions for Assigning Additional ACBS Disposition Codes

Following are descriptions of the ACBS disposition codes adapted from standard BRFSS disposition codes and the ACBS disposition codes added to the standard set of BRFSS disposition codes. For detailed definitions for the standard BRFSS disposition codes, see the Survey Data Quality Report for each survey year [CDC - BRFSS Annual Survey Data](#).

I. Eligible, contacted: complete interview

1100 Complete

Definition: Respondent completes the ACBS interview through the last question.

1200 Partial complete

Definition: Respondent completes the ACBS interview at least through the end of Section 8 (medications).

II. Eligible, contacted: refusal or termination

4413 Refused to participate in the call-back during the BRFSS interview

Definition: During the BRFSS interview, respondents who indicate they have ever been told by a doctor that they have asthma are asked if they will participate in an additional survey at a later date. Some state Institutional Review Boards (IRBs) require that the content of the additional survey (asthma) be disclosed; other state IRBs require that the specific content not be disclosed. Some states have multiple call-back surveys in the field and do not specify the content of any of the call-back interviews. If a respondent refuses to participate in the call-back survey, that record is assigned disposition code 4413.

2112 Refused to begin the ACBS interview after contacted

Definition: If the selected respondent is contacted for the ACBS interview but refuses to begin the interview, then the record is assigned code 2112.

2120 Terminated within the questionnaire during the ACBS interview

Definition: If the respondent is contacted for the ACBS and terminates after the interview begins (section 3) but before completing section 8, then record is considered incomplete and is assigned disposition code 2120.

2211 Refused to allow combining ACBS responses with BRFSS responses

Definition: Some states require that the respondent provide active approval to combine their responses from the initial BRFSS interview with their responses from the ACBS interview. This approval may be requested at either the initial BRFSS interview or at the beginning of the ACBS interview. If the respondent does not approve combining data from the two interviews, the record is assigned disposition code 2211.

2212 Refused to answer the “ever had asthma” question during the ACBS interview

Definition: The selected respondent is contacted for the ACBS interview but refuses to answer the initial asthma question. If the respondent answers "don't know" or "refused" to the ACBS question EVER-ASTH (2.1) "Have you ever been told by a doctor or other health professional that (you have/sample child has) asthma?", then the record is assigned code 2212.

III. Eligible, lost to follow-up because unable to contact or communicate with the BRFSS respondent

4306 Selected ACBS respondent no longer living in the BRFSS household

Definition: The BRFSS respondent with asthma left the BRFSS household between the BRFSS interview and the ACBS interview. If the selected respondent (from the BRFSS) no longer lives in the BRFSS household but did live in the household during the BRFSS interview, then attempts should be made to obtain new contact information for the selected respondent, and the follow-up should be conducted using the new telephone number. If this is not possible or the household refuses to provide new contact information, then the record is assigned disposition code 4306.

Refer to the Annual Survey Data and Documentation for each survey year for the definitions of all other codes in this category
(http://www.cdc.gov/brfss/annual_data/annual_data.htm).

IV. Eligible, lost to follow-up for technical reasons

Refer to the Annual Survey Data and Documentation for each survey year for the definitions of all codes in this category
(http://www.cdc.gov/brfss/annual_data/annual_data.htm).

V. Ineligible

2290 The person the most knowledgeable about the selected child with asthma is not the parent or legal guardian (child ineligible)

Definition: This code applies only to the child ACBS interview. The child selected during the BRFSS interview is eligible for the ACBS (the BRFSS respondent indicated that the selected child has an asthma diagnosis). The ACBS child protocol allows a parent or guardian to transfer the interview to a more knowledgeable proxy respondent. If the BRFSS respondent is not the parent or guardian of the selected child with asthma, but the parent or guardian is present to transfer to the person most knowledgeable about the child's health, but the most knowledgeable person is not available, then the child is ineligible for the ACBS. The child record is assigned disposition code 2290

2291 No parent or legal guardian in the household (child ineligible)

Definition: This code applies only to the child ACBS interview. The child selected during the BRFSS interview is eligible for the ACBS (the BRFSS respondent

indicated that the selected child has an asthma diagnosis); however, ACBS child protocol requires that the BRFSS respondent must be the parent or guardian of the child to provide proxy responses for the child or to approve transfer to a more-knowledgeable proxy respondent. If there is no parent or guardian of the selected child with asthma in the household, the child is ineligible for the ACBS. The child record is assigned disposition code 2291.

4405 Out-of-state

Definition: The BRFSS question that determines eligibility for the ACBS is “Have you ever been told by a doctor, nurse, or other health professional that (you have/the sample child has) asthma?” Respondents who answer “yes” are eligible for the ACBS. If the respondent is a state resident at the time of the BRFSS interview but moves to an out-of-state residence between the BRFSS interview and the ACBS interview, the respondent is not eligible for the ACBS if either the new state or the old state is not participating in record transfers, and the record is assigned disposition code 4405.

4700 Household, no eligible respondent (respondent does not have asthma)

Definition: The BRFSS question that determines eligibility for the ACBS is “Have you ever been told by a doctor, nurse, or other health professional that (you have/the sample child has) asthma?” Respondents who answer “yes” are eligible for the ACBS. If the respondent informs the ACBS interviewer that the recorded response from the BRFSS interview was in error and terminates the call, then the respondent is not eligible for the ACBS, and the record is assigned disposition code 4700.

4411 Selected respondent not eligible for follow-up

Definition: If the respondent disagrees with the recorded response to the asthma question from the BRFSS interview and answers “no” to the ACBS question EVER-ASTH (2.1) “Have you ever been told by a doctor or other health professional that (you have/the sample child has) asthma?”, then the respondent is not eligible for the ACBS, and the record is assigned disposition code 4411.

4412 Transferred from BRFSS but not attempted (excluded by state)

Definition: The BRFSS question that determines eligibility for the ACBS is “Have you ever been told by a doctor, nurse, or other health professional that (you have/the sample child has) asthma?” Respondents who answer “yes” are eligible for the ACBS. Eligible respondents are then asked for permission to call back. Those that agree should be called for the ACBS interview, but if a respondent eligible to be called is transferred from BRFSS to the ACBS but never called, then the record is assigned disposition code 4412.

4471 Misdiagnosed asthma in respondent (2008 and later)

Definition: The BRFSS question that determines eligibility for the ACBS is “Have you ever been told by a doctor, nurse, or other health professional that (you have/the sample child has) asthma?” Respondents who answer “yes” are eligible for the

ACBS. The initial diagnosis, however, could have been in error and changed. This misdiagnosis is not captured by the BRFSS or ACBS. If the respondent informs the interviewer of the misdiagnosis, the respondent is not eligible for the ACBS, and the record is assigned disposition code 4470.

4480 Not recruited for call-back at BRFSS interview (excluded by state)

Definition: The BRFSS question that determines eligibility for the ACBS is “Have you ever been told by a doctor, nurse, or other health professional that (you have/the sample child has) asthma?” Respondents who answer “yes” are eligible for the ACBS. Eligible respondents are then asked for permission to call back. Those who agree should be called for the ACBS interview. However, if a respondent eligible to be called is not transferred from BRFSS to the ACBS and is never called, then the record is assigned disposition code 4480.

4490 Random child/adult selection: adult ineligible, child selected

Definition: If both the BRFSS respondent and the randomly selected child in the household have asthma and the BRFSS respondent agrees to the call-back interview, one or the other is randomly selected to be eligible for the call-back. If the child is selected, the adult is ineligible, and the adult record is assigned disposition code 4490.

4491 Random child/adult selection: child ineligible, adult selected

Definition: If both the BRFSS respondent and the randomly selected child in the household have asthma and the BRFSS respondent agrees to the call-back interview, one or the other is randomly selected to be eligible for the call-back. If the adult is selected, the child is ineligible, and the child record is assigned disposition code 4491.

**Appendix C:
Asthma Call-back Survey (ACBS)
Non-response Bias Analysis**

Two data tables follow adult and child participants. The first table reports ACBS unweighted frequencies for respondents, non-respondents, and BRFSS-eligible asthma respondents by age, sex, and race/ethnicity demographic categories for each state. The second table reports estimated current asthma percentage among individuals who have ever been diagnosed with asthma.

Table 1A. Percentage of ACBS adult respondent, non-respondents, and BRFSS-eligible asthma respondents by demographic groups and state/territory

Table 1B. Percentage of ACBS child respondents (aged 0 -17), non-respondents, and BRFSS-eligible asthma respondents by demographic groups and state/territory

Table 2A. Estimated percentage of current asthma status among adults ever-diagnosed with asthma by state/territory

Table 2B. Estimated percentage of current asthma status among children (0-17 years) ever-diagnosed with asthma by state/territory

Notes:

For tables in Appendix C denominator excludes: Respondents with do not know/refused/missing responses.

Table 1A. Percentage of ACBS adult (aged ≥ 18) respondents, non-respondents, and BRFSS-eligible asthma respondents by demographic groups and state/territory											
ADULTS		BRFSS				ACBS		ACBS			
		Eligible Asthma Respondents				Non-Respondents		Respondents			
State	Demographics	Sample size (unweighted)	Percent (unweighted)	Weighted total	Percent (weighted)	Sample size (unweighted)	Percent (unweighted)	Sample size (unweighted)	Percent (unweighted)	Weighted total	Percent (weighted)
States/areas total	Male	14,439	37.9	9,789,801	40.6	8,881	38.1	5,558	37.5	9,795,304	40.6
	Female	23,703	62.1	14,310,540	59.4	14,429	61.9	9,274	62.5	14,316,031	59.4
	Age 18 to 24	3,034	8.1	3,664,104	15.4	1,999	8.7	1,035	7.1	3,492,532	14.6
	Age 25 to 34	4,729	12.6	4,397,275	18.5	3,004	13.1	1,725	11.8	4,575,224	19.1
	Age 35 to 44	5,512	14.7	3,964,750	16.7	3,651	16	1,861	12.7	3,990,719	16.7
	Age 45 to 54	5,742	15.3	3,304,261	13.9	3,625	15.9	2,117	14.4	3,395,923	14.2
	Age 55 to 64	7,176	19.1	3,745,731	15.7	4,158	18.2	3,018	20.6	3,756,007	15.7
	Age 65 or older	11,348	30.2	4,712,221	19.8	6,424	28.1	4,924	33.5	4,745,718	19.8
	White - Non-Hispanic	28,251	75.7	14,627,643	62	16,716	73.5	11,535	79.1	15,775,626	66.7
	Black - Non-Hispanic	2,788	7.5	2,811,209	11.9	1,799	7.9	989	6.8	2,417,171	10.2
	Other race only, Non-Hispanic	1,892	5.1	1,506,282	6.4	1,268	5.6	624	4.3	1,308,188	5.5
	Multiracial, Non-Hispanic	1,206	3.2	462,444	2	761	3.3	445	3.1	505,269	2.1
	Hispanic	3,175	8.5	4,184,096	17.7	2,190	9.6	985	6.8	3,647,265	15.4
Arizona	Male	580	38	338,490	43	435	38.3	145	37.3	338,490	43
	Female	945	62	447,944	57	701	61.7	244	62.7	447,944	57
	Age 18 to 24	128	8.5	141,777	18.3	95	8.5	33	8.5	141,777	18
	Age 25 to 34	142	9.4	123,133	15.9	101	9	41	10.5	123,133	15.7
	Age 35 to 44	208	13.8	126,557	16.3	163	14.6	45	11.6	130,853	16.6
	Age 45 to 54	230	15.3	94,673	12.2	174	15.6	56	14.4	99,767	12.7
	Age 55 to 64	302	20.1	131,841	17	226	20.2	76	19.5	132,996	16.9
	Age 65 or older	496	32.9	157,786	20.3	358	32.1	138	35.5	157,907	20.1
	White - Non-Hispanic	1,068	71.6	467,375	60.9	773	69.6	295	77.4	535,906	69.3
	Black - Non-Hispanic	48	3.2	51,499	6.7	39	3.5	9	2.4	29,853	3.9
	Other race only, Non-Hispanic	91	6.1	44,596	5.8	75	6.8	16	4.2	32,062	4.1
	Multiracial, Non-Hispanic	43	2.9	14,657	1.9	33	3	10	2.6	9,676	1.3
	Hispanic	241	16.2	188,901	24.6	190	17.1	51	13.4	166,297	21.5

Table 1A. Percentage of ACBS adult (aged ≥ 18) respondents, non-respondents, and BRFSS-eligible asthma respondents by demographic groups and state/territory											
ADULTS		BRFSS				ACBS		ACBS			
		Eligible Asthma Respondents				Non-Respondents		Respondents			
State	Demographics	Sample size (unweighted)	Percent (unweighted)	Weighted total	Percent (weighted)	Sample size (unweighted)	Percent (unweighted)	Sample size (unweighted)	Percent (unweighted)	Weighted total	Percent (weighted)
California	Male	365	43.7	1,700,152	44.3	276	45.3	89	39.2	1,700,152	44.3
	Female	471	56.3	2,137,408	55.7	333	54.7	138	60.8	2,137,408	55.7
	Age 18 to 24	82	9.8	454,045	11.8	67	11	15	6.6	363,342	9.5
	Age 25 to 34	124	14.9	734,164	19.1	94	15.5	30	13.2	824,867	21.5
	Age 35 to 44	136	16.3	777,754	20.3	104	17.1	32	14.1	777,754	20.3
	Age 45 to 54	116	13.9	514,100	13.4	83	13.7	33	14.5	515,750	13.4
	Age 55 to 64	143	17.1	540,787	14.1	96	15.8	47	20.7	540,787	14.1
	Age 65 or older	233	27.9	814,546	21.2	163	26.9	70	30.8	815,060	21.2
	White - Non-Hispanic	401	48.8	1,516,843	40.1	274	45.9	127	56.4	1,741,546	45.9
	Black - Non-Hispanic	62	7.5	304,020	8	47	7.9	15	6.7	244,981	6.5
	Other race only, Non-Hispanic	81	9.9	564,977	14.9	62	10.4	19	8.4	452,819	11.9
	Multiracial, Non-Hispanic	32	3.9	84,211	2.2	24	4	8	3.6	103,461	2.7
	Hispanic	246	29.9	1,310,168	34.7	190	31.8	56	24.9	1,247,738	32.9
	Connecticut	Male	466	37.7	176,772	41.5	236	34.4	230	41.9	176,806
Female		769	62.3	249,504	58.5	450	65.6	319	58.1	249,877	58.6
Age 18 to 24		98	8.1	74,987	17.9	57	8.5	41	7.6	74,987	18
Age 25 to 34		181	15	83,841	20.1	98	14.7	83	15.3	83,841	20.1
Age 35 to 44		190	15.7	59,191	14.2	114	17.1	76	14	59,576	14.3
Age 45 to 54		225	18.6	59,944	14.3	147	22	78	14.4	57,009	13.7
Age 55 to 64		256	21.2	70,373	16.8	130	19.5	126	23.3	70,373	16.9
Age 65 or older		258	21.4	69,652	16.7	121	18.1	137	25.3	70,807	17
White - Non-Hispanic		833	69	252,504	60.6	439	65.5	394	73.4	277,042	65.9
Black - Non-Hispanic		103	8.5	55,502	13.3	56	8.4	47	8.8	50,104	11.9
Other race only, Non-Hispanic		48	4	19,986	4.8	26	3.9	22	4.1	23,234	5.5
Multiracial, Non-Hispanic	28	2.3	4,084	1	14	2.1	14	2.6	3,503	0.8	
Hispanic	195	16.2	84,394	20.3	135	20.1	60	11.2	66,331	15.8	

Table 1A. Percentage of ACBS adult (aged ≥ 18) respondents, non-respondents, and BRFSS-eligible asthma respondents by demographic groups and state/territory											
ADULTS		BRFSS				ACBS		ACBS			
		Eligible Asthma Respondents				Non-Respondents		Respondents			
State	Demographics	Sample size (unweighted)	Percent (unweighted)	Weighted total	Percent (weighted)	Sample size (unweighted)	Percent (unweighted)	Sample size (unweighted)	Percent (unweighted)	Weighted total	Percent (weighted)
Florida	Male	267	33.5	422,448	38.5	141	35.3	126	31.6	422,448	38.5
	Female	531	66.5	673,993	61.5	258	64.7	273	68.4	674,049	61.5
	Age 18 to 24	31	4	132,088	12.2	9	2.3	22	5.6	156,443	14.6
	Age 25 to 34	65	8.3	132,657	12.3	28	7.2	37	9.5	108,301	10.1
	Age 35 to 44	105	13.5	199,207	18.5	59	15.2	46	11.8	200,228	18.6
	Age 45 to 54	110	14.1	185,386	17.2	62	15.9	48	12.3	181,705	16.9
	Age 55 to 64	145	18.6	175,480	16.3	70	18	75	19.2	174,403	16.2
	Age 65 or older	324	41.5	254,595	23.6	161	41.4	163	41.7	253,667	23.6
	White - Non-Hispanic	594	75.8	564,775	52.3	287	73.6	307	77.9	577,484	53.1
	Black - Non-Hispanic	75	9.6	175,058	16.2	45	11.5	30	7.6	109,456	10.1
	Other race only, Non-Hispanic	27	3.4	28,105	2.6	18	4.6	9	2.3	25,899	2.4
	Multiracial, Non-Hispanic	28	3.6	29,883	2.8	11	2.8	17	4.3	51,087	4.7
	Hispanic	60	7.7	281,928	26.1	29	7.4	31	7.9	322,782	29.7
Georgia	Male	317	30.4	383,833	37	213	32.3	104	27.2	384,491	37.1
	Female	725	69.6	652,355	63	446	67.7	279	72.8	652,355	62.9
	Age 18 to 24	71	7	171,991	17	47	7.3	24	6.4	149,444	14.8
	Age 25 to 34	128	12.5	240,386	23.8	91	14.1	37	9.8	262,933	26.1
	Age 35 to 44	123	12.1	153,648	15.2	84	13	39	10.4	153,648	15.2
	Age 45 to 54	143	14	125,170	12.4	92	14.3	51	13.6	121,392	12
	Age 55 to 64	193	18.9	142,162	14.1	114	17.7	79	21	142,162	14.1
	Age 65 or older	362	35.5	178,009	17.6	216	33.5	146	38.8	178,420	17.7
	White - Non-Hispanic	641	62.9	585,708	58.2	400	61.8	241	64.8	598,483	60.9
	Black - Non-Hispanic	282	27.7	300,163	29.8	177	27.4	105	28.2	275,435	28
	Other race only, Non-Hispanic	28	2.7	27,601	2.7	18	2.8	10	2.7	19,291	2
	Multiracial, Non-Hispanic	27	2.6	23,062	2.3	17	2.6	10	2.7	31,939	3.2
	Hispanic	41	4	70,388	7	35	5.4	6	1.6	57,976	5.9

Table 1A. Percentage of ACBS adult (aged ≥ 18) respondents, non-respondents, and BRFSS-eligible asthma respondents by demographic groups and state/territory											
ADULTS		BRFSS				ACBS		ACBS			
		Eligible Asthma Respondents				Non-Respondents		Respondents			
State	Demographics	Sample size (unweighted)	Percent (unweighted)	Weighted total	Percent (weighted)	Sample size (unweighted)	Percent (unweighted)	Sample size (unweighted)	Percent (unweighted)	Weighted total	Percent (weighted)
Hawaii	Male	391	38.7	65,176	42.5	300	39.8	91	35.5	65,176	42.2
	Female	619	61.3	88,345	57.5	454	60.2	165	64.5	89,298	57.8
	Age 18 to 24	98	9.8	22,515	14.8	82	11	16	6.3	23,369	15.2
	Age 25 to 34	143	14.3	29,228	19.2	121	16.3	22	8.7	29,266	19
	Age 35 to 44	120	12	20,255	13.3	99	13.3	21	8.3	18,348	11.9
	Age 45 to 54	131	13.1	18,639	12.3	99	13.3	32	12.6	21,848	14.2
	Age 55 to 64	176	17.7	23,021	15.2	129	17.4	47	18.5	23,265	15.1
	Age 65 or older	329	33	38,191	25.2	213	28.7	116	45.7	37,948	24.6
	White - Non-Hispanic	250	25.2	25,409	16.8	168	22.8	82	32.3	37,579	24.4
	Black - Non-Hispanic	12	1.2	3,161	2.1	8	1.1	4	1.6	4,113	2.7
	Other race only, Non-Hispanic	406	41	72,200	47.8	308	41.8	98	38.6	64,191	41.6
	Multiracial, Non-Hispanic	209	21.1	29,752	19.7	161	21.8	48	18.9	27,788	18
	Hispanic	114	11.5	20,647	13.7	92	12.5	22	8.7	20,555	13.3
Indiana	Male	493	35.5	308,746	39.5	203	33.6	290	37	308,746	39.4
	Female	896	64.5	473,216	60.5	402	66.4	494	63	474,004	60.6
	Age 18 to 24	91	6.7	124,078	16.2	40	6.9	51	6.6	124,078	16
	Age 25 to 34	199	14.7	179,523	23.4	79	13.6	120	15.5	179,523	23.2
	Age 35 to 44	157	11.6	104,997	13.7	74	12.7	83	10.8	106,206	13.7
	Age 45 to 54	205	15.1	91,429	11.9	91	15.6	114	14.8	97,082	12.5
	Age 55 to 64	270	19.9	115,356	15.1	111	19	159	20.6	116,143	15
	Age 65 or older	433	32	150,765	19.7	188	32.2	245	31.7	152,069	19.6
	White - Non-Hispanic	1,073	79.1	595,166	78.1	450	76.9	623	80.7	633,528	82.1
	Black - Non-Hispanic	136	10	92,897	12.2	65	11.1	71	9.2	72,789	9.4
	Other race only, Non-Hispanic	48	3.5	23,645	3.1	23	3.9	25	3.2	24,409	3.2
	Multiracial, Non-Hispanic	40	2.9	12,037	1.6	16	2.7	24	3.1	12,004	1.6
	Hispanic	60	4.4	38,782	5.1	31	5.3	29	3.8	28,780	3.7

Table 1A. Percentage of ACBS adult (aged ≥ 18) respondents, non-respondents, and BRFSS-eligible asthma respondents by demographic groups and state/territory											
ADULTS		BRFSS				ACBS		ACBS			
		Eligible Asthma Respondents				Non-Respondents		Respondents			
State	Demographics	Sample size (unweighted)	Percent (unweighted)	Weighted total	Percent (weighted)	Sample size (unweighted)	Percent (unweighted)	Sample size (unweighted)	Percent (unweighted)	Weighted total	Percent (weighted)
Iowa	Male	458	41.9	129,312	42.3	279	41.5	179	42.4	129,710	42.4
	Female	636	58.1	176,261	57.7	393	58.5	243	57.6	176,261	57.6
	Age 18 to 24	123	11.4	53,969	17.8	72	10.9	51	12.2	53,969	17.7
	Age 25 to 34	133	12.3	57,238	18.9	88	13.3	45	10.7	57,238	18.7
	Age 35 to 44	167	15.4	54,243	17.9	109	16.5	58	13.8	54,371	17.8
	Age 45 to 54	167	15.4	41,566	13.7	102	15.4	65	15.5	43,697	14.3
	Age 55 to 64	176	16.3	42,357	14	106	16	70	16.7	42,357	13.9
	Age 65 or older	315	29.1	53,497	17.7	185	27.9	130	31	53,790	17.6
	White - Non-Hispanic	925	86.3	251,131	83.9	558	85.1	367	88.2	263,337	87
	Black - Non-Hispanic	42	3.9	19,681	6.6	29	4.4	13	3.1	15,753	5.2
	Other race only, Non-Hispanic	23	2.1	10,677	3.6	15	2.3	8	1.9	5,255	1.7
	Multiracial, Non-Hispanic	23	2.1	8,227	2.7	15	2.3	8	1.9	5,813	1.9
	Hispanic	59	5.5	9,763	3.3	39	5.9	20	4.8	12,691	4.2
Kansas	Male	951	40.5	143,889	43.5	682	40.1	269	41.7	145,909	44.1
	Female	1,396	59.5	186,748	56.5	1,020	59.9	376	58.3	185,012	55.9
	Age 18 to 24	232	10	65,751	20.2	188	11.2	44	6.9	65,751	19.9
	Age 25 to 34	283	12.2	55,461	17	231	13.8	52	8.1	55,552	16.9
	Age 35 to 44	346	15	51,446	15.8	261	15.6	85	13.3	53,331	16.2
	Age 45 to 54	351	15.2	47,351	14.6	257	15.4	94	14.7	49,008	14.9
	Age 55 to 64	440	19	48,688	15	308	18.4	132	20.6	48,755	14.8
	Age 65 or older	661	28.6	56,642	17.4	427	25.5	234	36.5	57,281	17.4
	White - Non-Hispanic	1,926	83.8	247,944	76.6	1,376	82.9	550	86.1	259,310	79.2
	Black - Non-Hispanic	111	4.8	17,758	5.5	79	4.8	32	5	19,823	6.1
Other race only, Non-Hispanic	69	3	15,323	4.7	53	3.2	16	2.5	13,327	4.1	
Multiracial, Non-Hispanic	73	3.2	9,155	2.8	54	3.3	19	3	11,060	3.4	
Hispanic	119	5.2	33,647	10.4	97	5.8	22	3.4	23,757	7.3	

Table 1A. Percentage of ACBS adult (aged ≥ 18) respondents, non-respondents, and BRFS-eligible asthma respondents by demographic groups and state/territory											
ADULTS		BRFSS				ACBS		ACBS			
		Eligible Asthma Respondents				Non-Respondents		Respondents			
State	Demographics	Sample size (unweighted)	Percent (unweighted)	Weighted total	Percent (weighted)	Sample size (unweighted)	Percent (unweighted)	Sample size (unweighted)	Percent (unweighted)	Weighted total	Percent (weighted)
Kentucky	Male	327	41.7	208,014	39.8	232	41.5	95	42	208,014	39.8
	Female	458	58.3	314,268	60.2	327	58.5	131	58	314,268	60.2
	Age 18 to 24	73	9.4	79,802	15.4	54	9.8	19	8.4	98,088	18.8
	Age 25 to 34	103	13.3	98,942	19.1	80	14.5	23	10.2	80,656	15.4
	Age 35 to 44	103	13.3	72,179	14	73	13.3	30	13.3	72,179	13.8
	Age 45 to 54	117	15.1	75,223	14.5	86	15.6	31	13.7	79,300	15.2
	Age 55 to 64	162	20.9	93,961	18.2	107	19.5	55	24.3	94,956	18.2
	Age 65 or older	218	28.1	97,093	18.8	150	27.3	68	30.1	97,104	18.6
	White - Non-Hispanic	642	83.3	429,389	84.5	452	82.5	190	85.2	449,420	88.8
	Black - Non-Hispanic	81	10.5	47,175	9.3	60	10.9	21	9.4	29,691	5.9
	Other race only, Non-Hispanic	12	1.6	5,394	1.1	10	1.8	2	0.9	1,048	0.2
	Multiracial, Non-Hispanic	18	2.3	8,983	1.8	11	2	7	3.1	7,868	1.6
	Hispanic	18	2.3	17,171	3.4	15	2.7	3	1.3	18,245	3.6
Maine	Male	580	31.6	70,906	37.5	397	30.9	183	33.4	71,220	37.6
	Female	1,253	68.4	118,013	62.5	888	69.1	365	66.6	118,241	62.4
	Age 18 to 24	95	5.2	25,651	13.7	77	6.1	18	3.3	20,260	10.7
	Age 25 to 34	187	10.3	32,543	17.3	153	12.1	34	6.2	38,140	20.2
	Age 35 to 44	255	14	28,298	15.1	187	14.7	68	12.5	28,535	15.1
	Age 45 to 54	256	14.1	26,224	14	194	15.3	62	11.4	26,824	14.2
	Age 55 to 64	379	20.9	35,465	18.9	254	20	125	22.9	35,462	18.8
	Age 65 or older	643	35.4	39,498	21	404	31.8	239	43.8	39,776	21
	White - Non-Hispanic	1,674	93.4	169,241	92.3	1,165	92.8	509	94.6	177,297	94.7
	Other race only, Non-Hispanic	36	2	2,497	1.4	26	2.1	10	1.9	1,698	0.9
Multiracial, Non-Hispanic	34	1.9	4,333	2.4	23	1.8	11	2	4,955	2.6	
Hispanic	40	2.2	5,292	2.9	32	2.5	8	1.5	3,230	1.7	

Table 1A. Percentage of ACBS adult (aged ≥ 18) respondents, non-respondents, and BRFSS-eligible asthma respondents by demographic groups and state/territory											
ADULTS		BRFSS				ACBS		ACBS			
		Eligible Asthma Respondents				Non-Respondents		Respondents			
State	Demographics	Sample size (unweighted)	Percent (unweighted)	Weighted total	Percent (weighted)	Sample size (unweighted)	Percent (unweighted)	Sample size (unweighted)	Percent (unweighted)	Weighted total	Percent (weighted)
Maryland	Male	802	38	265,696	39.1	585	37.9	217	38.2	265,696	39.1
	Female	1,310	62	413,511	60.9	959	62.1	351	61.8	414,159	60.9
	Age 18 to 24	126	6.1	87,181	13.1	90	6	36	6.5	87,181	12.9
	Age 25 to 34	228	11	132,167	19.8	166	11	62	11.2	132,167	19.6
	Age 35 to 44	309	15	117,936	17.7	233	15.4	76	13.7	119,272	17.7
	Age 45 to 54	345	16.7	102,250	15.3	258	17.1	87	15.6	105,786	15.7
	Age 55 to 64	430	20.8	112,880	16.9	320	21.2	110	19.8	113,187	16.8
	Age 65 or older	627	30.4	115,606	17.3	442	29.3	185	33.3	116,503	17.3
	White - Non-Hispanic	1,255	61	319,152	47.9	905	60.2	350	63.1	312,164	46.9
	Black - Non-Hispanic	531	25.8	235,104	35.3	390	25.9	141	25.4	252,375	37.9
	Other race only, Non-Hispanic	96	4.7	48,880	7.3	71	4.7	25	4.5	50,767	7.6
	Multiracial, Non-Hispanic	64	3.1	10,275	1.5	52	3.5	12	2.2	6,025	0.9
	Hispanic	113	5.5	52,560	7.9	86	5.7	27	4.9	43,830	6.6
Massachusetts	Male	427	38.3	337,395	38	279	36.4	148	42.7	337,381	38
	Female	687	61.7	550,186	62	488	63.6	199	57.3	550,215	62
	Age 18 to 24	115	10.5	150,630	17.3	78	10.4	37	10.8	150,649	17.1
	Age 25 to 34	173	15.9	173,971	20	127	17	46	13.4	174,768	19.8
	Age 35 to 44	164	15	114,480	13.2	119	15.9	45	13.1	118,858	13.5
	Age 45 to 54	180	16.5	115,439	13.3	129	17.2	51	14.9	122,169	13.8
	Age 55 to 64	188	17.2	127,497	14.6	126	16.8	62	18.1	127,223	14.4
	Age 65 or older	271	24.8	188,364	21.6	169	22.6	102	29.7	189,712	21.5
	White - Non-Hispanic	828	75.2	643,636	73.6	549	72.4	279	81.3	701,924	80.8
	Black - Non-Hispanic	61	5.5	61,242	7	46	6.1	15	4.4	41,855	4.8
	Other race only, Non-Hispanic	41	3.7	52,706	6	27	3.6	14	4.1	54,464	6.3
	Multiracial, Non-Hispanic	18	1.6	17,096	2	12	1.6	6	1.7	21,354	2.5
	Hispanic	153	13.9	99,582	11.4	124	16.4	29	8.5	49,644	5.7

Table 1A. Percentage of ACBS adult (aged ≥ 18) respondents, non-respondents, and BRFSS-eligible asthma respondents by demographic groups and state/territory											
ADULTS		BRFSS				ACBS		ACBS			
		Eligible Asthma Respondents				Non-Respondents		Respondents			
State	Demographics	Sample size (unweighted)	Percent (unweighted)	Weighted total	Percent (weighted)	Sample size (unweighted)	Percent (unweighted)	Sample size (unweighted)	Percent (unweighted)	Weighted total	Percent (weighted)
Michigan	Male	503	37.7	514,948	41.6	217	40.7	286	35.7	514,948	41.6
	Female	831	62.3	722,832	58.4	316	59.3	515	64.3	722,832	58.4
	Age 18 to 24	109	8.4	218,810	17.9	43	8.4	66	8.3	218,810	17.8
	Age 25 to 34	165	12.6	228,449	18.7	62	12.1	103	13	228,449	18.6
	Age 35 to 44	175	13.4	192,714	15.8	85	16.6	90	11.4	192,714	15.7
	Age 45 to 54	213	16.3	170,198	13.9	82	16	131	16.5	179,156	14.6
	Age 55 to 64	272	20.8	204,974	16.8	97	18.9	175	22.1	205,722	16.7
	Age 65 or older	371	28.4	205,025	16.8	144	28.1	227	28.7	205,234	16.7
	White - Non-Hispanic	1,004	77	909,609	74.7	374	72.2	630	80.2	945,746	77.2
	Black - Non-Hispanic	169	13	181,216	14.9	88	17	81	10.3	157,586	12.9
	Other race only, Non-Hispanic	62	4.8	52,564	4.3	29	5.6	33	4.2	43,005	3.5
	Multiracial, Non-Hispanic	31	2.4	11,414	0.9	11	2.1	20	2.5	10,885	0.9
	Hispanic	38	2.9	62,176	5.1	16	3.1	22	2.8	67,268	5.5
	Minnesota	Male	778	40	229,575	41.8	495	41.4	283	37.8	229,575
Female		1,166	60	320,153	58.2	701	58.6	465	62.2	320,353	58.3
Age 18 to 24		156	8.2	75,542	13.9	110	9.5	46	6.1	75,542	13.7
Age 25 to 34		276	14.4	113,572	21	175	15	101	13.5	113,572	20.7
Age 35 to 44		332	17.4	100,850	18.6	214	18.4	118	15.8	102,708	18.7
Age 45 to 54		291	15.2	71,879	13.3	190	16.3	101	13.5	75,956	13.8
Age 55 to 64		346	18.1	79,392	14.6	196	16.8	150	20.1	79,392	14.4
Age 65 or older		511	26.7	100,862	18.6	279	24	232	31	102,758	18.7
White - Non-Hispanic		1,578	82.7	428,921	79.4	948	80.5	630	86.3	439,846	82.3
Black - Non-Hispanic		92	4.8	40,224	7.4	70	5.9	22	3	25,619	4.8
Other race only, Non-Hispanic		78	4.1	34,248	6.3	50	4.2	28	3.8	35,443	6.6
Multiracial, Non-Hispanic		65	3.4	14,298	2.6	41	3.5	24	3.3	16,433	3.1
Hispanic		95	5	22,787	4.2	69	5.9	26	3.6	17,150	3.2

Table 1A. Percentage of ACBS adult (aged ≥ 18) respondents, non-respondents, and BRFSS-eligible asthma respondents by demographic groups and state/territory

ADULTS		BRFSS				ACBS		ACBS			
		Eligible Asthma Respondents				Non-Respondents		Respondents			
State	Demographics	Sample size (unweighted)	Percent (unweighted)	Weighted total	Percent (weighted)	Sample size (unweighted)	Percent (unweighted)	Sample size (unweighted)	Percent (unweighted)	Weighted total	Percent (weighted)
Missouri	Male	587	38.5	252,227	42.5	402	39.5	185	36.6	252,235	42.5
	Female	936	61.5	341,196	57.5	616	60.5	320	63.4	341,479	57.5
	Age 18 to 24	141	9.5	81,658	14	110	11	31	6.3	81,646	13.9
	Age 25 to 34	203	13.6	111,994	19.2	144	14.5	59	11.9	112,872	19.2
	Age 35 to 44	223	14.9	106,450	18.3	165	16.6	58	11.7	106,448	18.1
	Age 45 to 54	229	15.3	84,228	14.5	155	15.6	74	14.9	89,813	15.2
	Age 55 to 64	266	17.8	96,286	16.5	158	15.9	108	21.8	97,036	16.5
	Age 65 or older	430	28.8	102,113	17.5	264	26.5	166	33.5	101,488	17.2
	White - Non-Hispanic	1,248	83.6	454,242	78.2	821	82.8	427	85.2	461,880	78.1
	Black - Non-Hispanic	117	7.8	72,637	12.5	79	8	38	7.6	81,759	13.8
	Other race only, Non-Hispanic	49	3.3	17,222	3	36	3.6	13	2.6	13,831	2.3
	Multiracial, Non-Hispanic	45	3	13,284	2.3	30	3	15	3	15,265	2.6
	Hispanic	34	2.3	23,477	4	26	2.6	8	1.6	18,696	3.2
Montana	Male	344	40.7	49,459	40.2	250	41.5	94	38.8	49,459	40.2
	Female	501	59.3	73,686	59.8	353	58.5	148	61.2	73,686	59.8
	Age 18 to 24	66	7.9	18,172	15	42	7.1	24	10	21,454	17.5
	Age 25 to 34	101	12.1	21,677	17.8	81	13.7	20	8.3	21,835	17.8
	Age 35 to 44	124	14.9	23,541	19.4	95	16	29	12	20,439	16.6
	Age 45 to 54	115	13.8	17,708	14.6	81	13.7	34	14.1	18,598	15.1
	Age 55 to 64	159	19.1	16,665	13.7	110	18.6	49	20.3	16,683	13.6
	Age 65 or older	268	32.2	23,791	19.6	183	30.9	85	35.3	23,887	19.4
	White - Non-Hispanic	665	80.6	102,396	84.9	469	80	196	82	100,933	83.1
	Other race only, Non-Hispanic	97	11.8	8,152	6.8	74	12.6	23	9.6	7,768	6.4
Multiracial, Non-Hispanic	37	4.5	3,693	3.1	25	4.3	12	5	4,944	4.1	
Hispanic	23	2.8	5,728	4.8	15	2.6	8	3.3	7,811	6.4	

Table 1A. Percentage of ACBS adult (aged ≥ 18) respondents, non-respondents, and BRFSS-eligible asthma respondents by demographic groups and state/territory											
ADULTS		BRFSS				ACBS		ACBS			
		Eligible Asthma Respondents				Non-Respondents		Respondents			
State	Demographics	Sample size (unweighted)	Percent (unweighted)	Weighted total	Percent (weighted)	Sample size (unweighted)	Percent (unweighted)	Sample size (unweighted)	Percent (unweighted)	Weighted total	Percent (weighted)
Nebraska	Male	576	37.4	68,799	40.5	377	37.7	199	36.7	69,018	40.6
	Female	966	62.6	101,061	59.5	623	62.3	343	63.3	101,061	59.4
	Age 18 to 24	142	9.3	27,414	16.2	104	10.5	38	7	27,414	16.2
	Age 25 to 34	193	12.6	32,102	19	129	13	64	11.9	32,321	19.1
	Age 35 to 44	215	14	32,141	19	140	14.1	75	13.9	32,141	19
	Age 45 to 54	192	12.5	20,834	12.3	126	12.7	66	12.2	20,670	12.2
	Age 55 to 64	261	17	24,086	14.2	157	15.8	104	19.3	24,118	14.3
	Age 65 or older	532	34.7	32,449	19.2	339	34.1	193	35.7	32,510	19.2
	White - Non-Hispanic	1,334	87.7	137,404	81.9	858	87.2	476	88.6	139,328	82.1
	Black - Non-Hispanic	32	2.1	9,229	5.5	22	2.2	10	1.9	10,749	6.3
	Other race only, Non-Hispanic	38	2.5	4,545	2.7	26	2.6	12	2.2	4,455	2.6
	Multiracial, Non-Hispanic	34	2.2	4,234	2.5	24	2.4	10	1.9	3,326	2
	Hispanic	83	5.5	12,347	7.4	54	5.5	29	5.4	11,821	7
New Hampshire	Male	332	33.7	76,551	40.4	127	33.9	205	33.6	77,266	40.6
	Female	653	66.3	112,858	59.6	248	66.1	405	66.4	112,858	59.4
	Age 18 to 24	40	4.1	27,254	14.6	18	4.9	22	3.7	27,251	14.5
	Age 25 to 34	78	8.1	32,514	17.4	33	9	45	7.5	32,518	17.3
	Age 35 to 44	98	10.1	28,444	15.2	47	12.9	51	8.5	28,859	15.3
	Age 45 to 54	144	14.9	31,192	16.7	48	13.2	96	15.9	31,288	16.6
	Age 55 to 64	193	20	30,040	16.1	72	19.7	121	20.1	30,150	16
	Age 65 or older	414	42.8	37,701	20.1	147	40.3	267	44.4	38,153	20.3
	White - Non-Hispanic	913	94.1	172,497	92.8	344	92.7	569	95	171,361	92.8
	Black - Non-Hispanic	2	0.2	103	0.1	1	0.3	1	0.2	51	0
	Other race only, Non-Hispanic	25	2.6	6,150	3.3	12	3.2	13	2.2	8,313	4.5
	Multiracial, Non-Hispanic	16	1.6	1,562	0.8	7	1.9	9	1.5	1,460	0.8
	Hispanic	14	1.4	5,624	3	7	1.9	7	1.2	3,410	1.8

Table 1A. Percentage of ACBS adult (aged ≥ 18) respondents, non-respondents, and BRFSS-eligible asthma respondents by demographic groups and state/territory											
ADULTS		BRFSS				ACBS		ACBS			
		Eligible Asthma Respondents				Non-Respondents		Respondents			
State	Demographics	Sample size (unweighted)	Percent (unweighted)	Weighted total	Percent (weighted)	Sample size (unweighted)	Percent (unweighted)	Sample size (unweighted)	Percent (unweighted)	Weighted total	Percent (weighted)
New Jersey	Male	360	36.9	332,621	36.4	171	36.8	189	37	332,621	36.3
	Female	616	63.1	581,588	63.6	294	63.2	322	63	582,781	63.7
	Age 18 to 24	83	8.7	147,706	16.6	32	7.1	51	10.3	147,706	16.6
	Age 25 to 34	134	14.1	161,483	18.2	62	13.7	72	14.5	162,677	18.3
	Age 35 to 44	161	17	156,201	17.6	88	19.4	73	14.7	153,153	17.2
	Age 45 to 54	167	17.6	134,708	15.1	91	20.1	76	15.3	132,692	14.9
	Age 55 to 64	161	17	126,470	14.2	74	16.3	87	17.5	126,470	14.2
	Age 65 or older	243	25.6	162,668	18.3	106	23.4	137	27.6	166,932	18.8
	White - Non-Hispanic	498	52.8	502,046	56.2	213	48.2	285	56.8	538,973	59.5
	Black - Non-Hispanic	141	14.9	128,614	14.4	65	14.7	76	15.1	135,041	14.9
	Other race only, Non-Hispanic	71	7.5	79,375	8.9	34	7.7	37	7.4	85,197	9.4
	Multiracial, Non-Hispanic	19	2	5,566	0.6	10	2.3	9	1.8	4,501	0.5
Hispanic	215	22.8	177,368	19.9	120	27.1	95	18.9	142,343	15.7	
New Mexico	Male	302	34.1	82,132	37.2	197	33.8	105	34.7	83,174	37.6
	Female	583	65.9	138,476	62.8	385	66.2	198	65.3	137,884	62.4
	Age 18 to 24	73	8.3	35,364	16.2	55	9.6	18	6	35,261	16
	Age 25 to 34	117	13.3	41,060	18.9	71	12.3	46	15.2	41,164	18.7
	Age 35 to 44	140	16	33,856	15.6	102	17.7	38	12.6	33,936	15.4
	Age 45 to 54	109	12.4	24,002	11	68	11.8	41	13.6	25,681	11.6
	Age 55 to 64	142	16.2	30,524	14	89	15.5	53	17.5	30,763	13.9
	Age 65 or older	296	33.8	52,894	24.3	190	33	106	35.1	53,895	24.4
	White - Non-Hispanic	449	53.1	88,114	42	282	51.2	167	56.6	104,311	48.1
	Black - Non-Hispanic	6	0.7	2,653	1.3	4	0.7	2	0.7	1,754	0.8
	Other race only, Non-Hispanic	80	9.5	15,975	7.6	55	10	25	8.5	19,013	8.8
	Multiracial, Non-Hispanic	17	2	4,199	2	11	2	6	2	3,313	1.5
Hispanic	294	34.8	98,883	47.1	199	36.1	95	32.2	88,390	40.8	

Table 1A. Percentage of ACBS adult (aged ≥ 18) respondents, non-respondents, and BRFSS-eligible asthma respondents by demographic groups and state/territory											
ADULTS		BRFSS				ACBS		ACBS			
		Eligible Asthma Respondents				Non-Respondents		Respondents			
State	Demographics	Sample size (unweighted)	Percent (unweighted)	Weighted total	Percent (weighted)	Sample size (unweighted)	Percent (unweighted)	Sample size (unweighted)	Percent (unweighted)	Weighted total	Percent (weighted)
New York	Male	689	37.1	931,025	40.4	308	35.6	381	38.5	933,456	40.5
	Female	1,167	62.9	1,370,928	59.6	558	64.4	609	61.5	1,371,458	59.5
	Age 18 to 24	141	7.7	404,310	17.8	71	8.4	70	7.2	306,539	13.4
	Age 25 to 34	216	11.8	435,146	19.2	101	11.9	115	11.8	532,917	23.3
	Age 35 to 44	244	13.4	323,494	14.3	134	15.8	110	11.3	325,910	14.3
	Age 45 to 54	267	14.6	264,814	11.7	143	16.9	124	12.7	267,370	11.7
	Age 55 to 64	388	21.3	394,184	17.4	166	19.6	222	22.7	396,755	17.4
	Age 65 or older	568	31.1	446,333	19.7	233	27.5	335	34.3	455,223	19.9
	White - Non-Hispanic	1,311	72.4	1,237,779	55.3	575	68.4	736	76	1,416,979	63.3
	Black - Non-Hispanic	145	8	319,338	14.3	76	9	69	7.1	248,813	11.1
Other race only, Non-Hispanic	87	4.8	171,261	7.7	40	4.8	47	4.9	164,417	7.3	
Multiracial, Non-Hispanic	59	3.3	25,132	1.1	24	2.9	35	3.6	30,765	1.4	
Hispanic	208	11.5	484,293	21.6	126	15	82	8.5	377,155	16.9	
Ohio	Male	703	36.3	523,696	39.6	494	36.4	209	35.9	523,696	39.6
	Female	1,236	63.7	799,689	60.4	863	63.6	373	64.1	799,689	60.4
	Age 18 to 24	151	7.9	207,292	15.8	101	7.6	50	8.6	207,292	15.7
	Age 25 to 34	223	11.6	213,325	16.3	156	11.7	67	11.5	213,325	16.1
	Age 35 to 44	281	14.7	214,949	16.4	199	14.9	82	14.1	218,478	16.5
	Age 45 to 54	320	16.7	199,003	15.2	231	17.3	89	15.3	207,388	15.7
	Age 55 to 64	391	20.4	225,702	17.2	258	19.3	133	22.9	225,702	17.1
	Age 65 or older	551	28.7	249,885	19.1	390	29.2	161	27.7	251,199	19
	White - Non-Hispanic	1,610	84.5	1,026,823	79.1	1,120	84.1	490	85.2	1,104,596	85.2
	Black - Non-Hispanic	139	7.3	169,321	13	101	7.6	38	6.6	123,855	9.6
Other race only, Non-Hispanic	33	1.7	21,885	1.7	26	2	7	1.2	8,095	0.6	
Multiracial, Non-Hispanic	76	4	28,933	2.2	48	3.6	28	4.9	27,698	2.1	
Hispanic	48	2.5	51,032	3.9	36	2.7	12	2.1	32,068	2.5	

Table 1A. Percentage of ACBS adult (aged ≥ 18) respondents, non-respondents, and BRFSS-eligible asthma respondents by demographic groups and state/territory											
ADULTS		BRFSS				ACBS		ACBS			
		Eligible Asthma Respondents				Non-Respondents		Respondents			
State	Demographics	Sample size (unweighted)	Percent (unweighted)	Weighted total	Percent (weighted)	Sample size (unweighted)	Percent (unweighted)	Sample size (unweighted)	Percent (unweighted)	Weighted total	Percent (weighted)
Oregon	Male	308	37.9	208,493	39.8	186	37.2	122	39	208,455	39.9
	Female	505	62.1	315,102	60.2	314	62.8	191	61	314,354	60.1
	Age 18 to 24	58	7.2	58,095	11.2	38	7.7	20	6.4	57,519	11.1
	Age 25 to 34	103	12.8	81,858	15.8	65	13.2	38	12.2	81,087	15.6
	Age 35 to 44	172	21.4	100,018	19.3	112	22.8	60	19.3	100,021	19.3
	Age 45 to 54	135	16.8	74,061	14.3	82	16.7	53	17	76,003	14.6
	Age 55 to 64	140	17.4	91,064	17.6	89	18.1	51	16.4	91,124	17.6
	Age 65 or older	195	24.3	112,571	21.7	106	21.5	89	28.6	113,286	21.8
	White - Non-Hispanic	666	83.7	411,255	79.9	406	82.9	260	85	422,340	82.7
	Black - Non-Hispanic	18	2.3	20,881	4.1	11	2.2	7	2.3	18,177	3.6
	Other race only, Non-Hispanic	37	4.6	33,318	6.5	27	5.5	10	3.3	26,041	5.1
Multiracial, Non-Hispanic	27	3.4	15,458	3	13	2.7	14	4.6	21,734	4.3	
Hispanic	48	6	34,068	6.6	33	6.7	15	4.9	22,107	4.3	
Pennsylvania	Male	354	40.5	594,514	42.7	246	40.5	108	40.4	594,514	42.7
	Female	520	59.5	796,660	57.3	361	59.5	159	59.6	796,660	57.3
	Age 18 to 24	79	9.2	203,262	14.9	55	9.3	24	9	203,262	14.6
	Age 25 to 34	139	16.2	263,089	19.3	106	17.9	33	12.4	263,089	18.9
	Age 35 to 44	152	17.7	232,794	17.1	112	18.9	40	15	241,659	17.4
	Age 45 to 54	136	15.8	177,264	13	94	15.9	42	15.8	190,063	13.7
	Age 55 to 64	160	18.6	215,469	15.8	103	17.4	57	21.4	215,469	15.5
	Age 65 or older	193	22.5	273,002	20	123	20.7	70	26.3	277,324	19.9
	White - Non-Hispanic	616	71.9	990,607	73	415	69.9	201	76.4	1,042,385	77
	Black - Non-Hispanic	139	16.2	200,638	14.8	103	17.3	36	13.7	182,157	13.4
	Other race only, Non-Hispanic	25	2.9	33,630	2.5	17	2.9	8	3	17,783	1.3
Multiracial, Non-Hispanic	15	1.8	10,181	0.7	12	2	3	1.1	5,744	0.4	
Hispanic	62	7.2	122,465	9	47	7.9	15	5.7	106,312	7.8	

Table 1A. Percentage of ACBS adult (aged ≥ 18) respondents, non-respondents, and BRFSS-eligible asthma respondents by demographic groups and state/territory											
ADULTS		BRFSS				ACBS		ACBS			
		Eligible Asthma Respondents				Non-Respondents		Respondents			
State	Demographics	Sample size (unweighted)	Percent (unweighted)	Weighted total	Percent (weighted)	Sample size (unweighted)	Percent (unweighted)	Sample size (unweighted)	Percent (unweighted)	Weighted total	Percent (weighted)
Rhode Island	Male	313	34.4	64,596	43	132	35.8	181	33.5	64,614	43
	Female	596	65.6	85,614	57	237	64.2	359	66.5	85,614	57
	Age 18 to 24	58	6.5	25,497	17.4	27	7.5	31	5.9	24,237	16.5
	Age 25 to 34	105	11.8	25,078	17.1	34	9.4	71	13.4	26,338	18
	Age 35 to 44	117	13.1	22,279	15.2	53	14.6	64	12.1	22,417	15.3
	Age 45 to 54	145	16.3	19,389	13.2	66	18.2	79	14.9	18,288	12.5
	Age 55 to 64	195	21.9	25,982	17.7	79	21.8	116	21.9	26,302	17.9
	Age 65 or older	271	30.4	28,693	19.5	103	28.5	168	31.8	29,071	19.8
	White - Non-Hispanic	680	77.1	106,741	73.5	269	76.4	411	77.5	112,583	75.5
	Black - Non-Hispanic	37	4.2	6,707	4.6	14	4	23	4.3	5,876	3.9
	Other race only, Non-Hispanic	37	4.2	6,717	4.6	12	3.4	25	4.7	6,756	4.5
	Multiracial, Non-Hispanic	27	3.1	3,433	2.4	13	3.7	14	2.6	2,998	2
	Hispanic	101	11.5	21,677	14.9	44	12.5	57	10.8	20,826	14
Texas	Male	499	37.9	845,198	36.4	287	37.6	212	38.3	845,198	36.4
	Female	818	62.1	1,476,490	63.6	477	62.4	341	61.7	1,477,132	63.6
	Age 18 to 24	105	8.1	366,912	16	67	8.9	38	7	366,912	15.8
	Age 25 to 34	172	13.3	364,812	15.9	101	13.5	71	13	364,812	15.7
	Age 35 to 44	186	14.4	352,110	15.4	123	16.4	63	11.5	353,959	15.3
	Age 45 to 54	192	14.8	360,079	15.7	118	15.7	74	13.6	378,555	16.3
	Age 55 to 64	239	18.4	360,570	15.7	131	17.5	108	19.8	363,448	15.7
	Age 65 or older	402	31	488,698	21.3	210	28	192	35.2	491,440	21.2
	White - Non-Hispanic	746	58.8	1,124,210	49.7	410	56	336	62.7	1,290,735	56.9
	Black - Non-Hispanic	135	10.6	236,859	10.5	79	10.8	56	10.4	247,717	10.9
	Other race only, Non-Hispanic	46	3.6	71,479	3.2	28	3.8	18	3.4	72,949	3.2
	Multiracial, Non-Hispanic	36	2.8	37,184	1.6	16	2.2	20	3.7	34,245	1.5
	Hispanic	305	24.1	793,719	35.1	199	27.2	106	19.8	623,707	27.5

Table 1A. Percentage of ACBS adult (aged ≥ 18) respondents, non-respondents, and BRFSS-eligible asthma respondents by demographic groups and state/territory											
ADULTS		BRFSS				ACBS		ACBS			
		Eligible Asthma Respondents				Non-Respondents		Respondents			
State	Demographics	Sample size (unweighted)	Percent (unweighted)	Weighted total	Percent (weighted)	Sample size (unweighted)	Percent (unweighted)	Sample size (unweighted)	Percent (unweighted)	Weighted total	Percent (weighted)
Utah	Male	677	45.7	158,720	46.2	454	47.2	223	43	156,119	45.4
	Female	804	54.3	184,816	53.8	508	52.8	296	57	187,417	54.6
	Age 18 to 24	160	10.9	68,948	20.2	118	12.4	42	8.1	68,948	20.1
	Age 25 to 34	213	14.5	72,420	21.3	143	15.1	70	13.5	72,420	21.1
	Age 35 to 44	275	18.8	66,652	19.6	192	20.3	83	16	66,652	19.4
	Age 45 to 54	213	14.5	43,969	12.9	148	15.6	65	12.5	46,188	13.5
	Age 55 to 64	219	14.9	39,063	11.5	129	13.6	90	17.4	39,376	11.5
	Age 65 or older	386	26.3	49,741	14.6	218	23	168	32.4	49,774	14.5
	White - Non-Hispanic	1,258	86.5	279,042	82.3	803	85.4	455	88.3	293,198	85.9
	Black - Non-Hispanic	13	0.9	5,315	1.6	7	0.7	6	1.2	2,846	0.8
	Other race only, Non-Hispanic	46	3.2	10,962	3.2	30	3.2	16	3.1	10,119	3
	Multiracial, Non-Hispanic	23	1.6	8,938	2.6	14	1.5	9	1.7	10,402	3
	Hispanic	115	7.9	35,002	10.3	86	9.1	29	5.6	24,805	7.3
Vermont	Male	387	38.4	38,071	43.6	138	38.2	249	38.5	38,105	43.6
	Female	620	61.6	49,316	56.4	223	61.8	397	61.5	49,357	56.4
	Age 18 to 24	45	4.5	11,335	13.1	16	4.5	29	4.5	11,335	13
	Age 25 to 34	118	11.9	17,373	20	38	10.7	80	12.5	17,373	20
	Age 35 to 44	147	14.8	13,249	15.3	61	17.2	86	13.4	13,249	15.2
	Age 45 to 54	177	17.8	12,730	14.7	77	21.8	100	15.6	12,942	14.9
	Age 55 to 64	221	22.2	15,203	17.5	81	22.9	140	21.9	15,238	17.5
	Age 65 or older	286	28.8	16,778	19.4	81	22.9	205	32	16,857	19.4
	White - Non-Hispanic	911	92.5	79,383	92.3	323	91.8	588	92.9	80,721	93.5
	Black - Non-Hispanic	10	1	669	0.8	4	1.1	6	0.9	590	0.7
	Other race only, Non-Hispanic	29	2.9	2,690	3.1	10	2.8	19	3	2,439	2.8
	Multiracial, Non-Hispanic	20	2	1,130	1.3	8	2.3	12	1.9	837	1
	Hispanic	15	1.5	2,150	2.5	7	2	8	1.3	1,732	2

Table 1A. Percentage of ACBS adult (aged ≥ 18) respondents, non-respondents, and BRFSS-eligible asthma respondents by demographic groups and state/territory											
ADULTS		BRFSS				ACBS		ACBS			
		Eligible Asthma Respondents				Non-Respondents		Respondents			
State	Demographics	Sample size (unweighted)	Percent (unweighted)	Weighted total	Percent (weighted)	Sample size (unweighted)	Percent (unweighted)	Sample size (unweighted)	Percent (unweighted)	Weighted total	Percent (weighted)
Wisconsin	Male	303	38.3	268,348	42.8	142	37.9	161	38.6	268,613	42.8
	Female	489	61.7	358,325	57.2	233	62.1	256	61.4	358,325	57.2
	Age 18 to 24	64	8.2	102,069	16.4	36	9.8	28	6.8	102,069	16.3
	Age 25 to 34	84	10.8	108,070	17.4	46	12.6	38	9.2	108,070	17.3
	Age 35 to 44	87	11.2	84,815	13.7	50	13.7	37	8.9	84,815	13.6
	Age 45 to 54	121	15.5	100,809	16.2	51	13.9	70	16.9	103,936	16.6
	Age 55 to 64	163	20.9	110,191	17.8	72	19.7	91	22	110,191	17.6
	Age 65 or older	261	33.5	114,776	18.5	111	30.3	150	36.2	116,641	18.6
	White - Non-Hispanic	654	84.2	508,302	82.7	290	79.7	364	88.1	544,691	87.7
	Black - Non-Hispanic	37	4.8	51,006	8.3	22	6	15	3.6	28,351	4.6
	Other race only, Non-Hispanic	46	5.9	19,523	3.2	30	8.2	16	3.9	14,100	2.3
	Multiracial, Non-Hispanic	22	2.8	18,049	2.9	11	3	11	2.7	14,185	2.3
	Hispanic	18	2.3	18,076	2.9	11	3	7	1.7	19,809	3.2

Table 1B. Percentage of ACBS child (aged 0-17 years) respondents, non-respondents, and BRFSS-eligible asthma respondents by demographic groups and state/territory

CHILDREN		BRFSS				ACBS		ACBS			
		Eligible Asthma Respondents				Non-Respondents		Respondents			
State	Demographics	Sample size (unweighted)	Percent (unweighted)	Weighted total	Percent (weighted)	Sample size (unweighted)	Percent (unweighted)	Sample size (unweighted)	Percent (unweighted)	Weighted total	Percent (weighted)
States/areas total	Boy	1,280	59	1,042,296	53.8	703	59.6	577	58.3	1,057,150	54.2
	Girl	890	41	894,433	46.2	477	40.4	413	41.7	893,635	45.8
	Age 0 to 4	126	6.6	157,595	9.6	60	6	66	7.2	197,909	10.1
	Age 5 to 9	402	21	475,070	29.1	213	21.5	189	20.6	553,440	28.2
	Age 10 to 14	734	38.4	537,754	32.9	392	39.5	342	37.2	647,798	33
	Age 15 to 17	650	34	463,437	28.4	328	33	322	35	563,571	28.7
	White only	1,535	71.5	1,066,838	55.7	817	70.4	718	72.9	1,271,794	65.2
	Black or African American only	262	12.2	454,700	23.7	136	11.7	126	12.8	371,913	19.1
	Other Races and Multiracial	349	16.3	393,482	20.5	208	17.9	141	14.3	305,953	15.7
Connecticut	Boy	121	54	52,759	57.2	65	53.7	56	54.4	52,759	57.1
	Girl	103	46	39,485	42.8	56	46.3	47	45.6	39,583	42.9
	Age 0 to 4	18	8.9	15,813	19.8	10	9.8	8	8	10,078	10.9
	Age 5 to 9	41	20.3	16,771	21	22	21.6	19	19	25,099	27.1
	Age 10 to 14	79	39.1	23,388	29.3	44	43.1	35	35	31,355	33.9
	Age 15 to 17	64	31.7	23,986	30	26	25.5	38	38	25,992	28.1
	White only	129	58.1	40,010	45	65	54.6	64	62.1	37,008	41
	Black or African American only	31	14	18,771	21.1	13	10.9	18	17.5	29,227	32.4
	Other Races and Multiracial	62	27.9	30,040	33.8	41	34.5	21	20.4	24,065	26.6
Indiana	Boy	124	60.5	83,668	55.8	51	60.7	73	60.3	84,927	55.6
	Girl	81	39.5	66,163	44.2	33	39.3	48	39.7	67,749	44.4
	Age 0 to 4	19	10.4	21,454	16	5	6.8	14	12.7	21,424	14
	Age 5 to 9	30	16.4	36,222	27	11	15.1	19	17.3	38,496	25.2
	Age 10 to 14	72	39.3	35,927	26.8	28	38.4	44	40	55,054	36.1
	Age 15 to 17	62	33.9	40,392	30.1	29	39.7	33	30	37,703	24.7
	White only	140	68.6	80,872	54.4	58	67.4	82	69.5	82,679	54.8
	Black or African American only	39	19.1	41,353	27.8	14	16.3	25	21.2	41,436	27.4
	Other Races and Multiracial	25	12.3	26,497	17.8	14	16.3	11	9.3	26,869	17.8

Table 1B. Percentage of ACBS child (aged 0-17 years) respondents, non-respondents, and BRFSS-eligible asthma respondents by demographic groups and state/territory

CHILDREN		BRFSS				ACBS		ACBS			
		Eligible Asthma Respondents				Non-Respondents		Respondents			
State	Demographics	Sample size (unweighted)	Percent (unweighted)	Weighted total	Percent (weighted)	Sample size (unweighted)	Percent (unweighted)	Sample size (unweighted)	Percent (unweighted)	Weighted total	Percent (weighted)
Michigan	Boy	124	64.6	128,847	61.7	55	67.9	69	62.2	128,847	61.6
	Girl	68	35.4	79,973	38.3	26	32.1	42	37.8	80,171	38.4
	Age 0 to 4	3	1.8	8,672	4.6	1	1.5	2	2	2,990	1.4
	Age 5 to 9	44	26.3	62,435	33.2	14	21.2	30	29.7	72,173	34.5
	Age 10 to 14	53	31.7	53,167	28.3	27	40.9	26	25.7	55,123	26.4
	Age 15 to 17	67	40.1	63,586	33.8	24	36.4	43	42.6	78,733	37.7
	White only	130	68.8	135,540	65.8	53	67.1	77	70	135,969	65.6
	Black or African American only	36	19	49,049	23.8	18	22.8	18	16.4	46,195	22.3
	Other Races and Multiracial	23	12.2	21,255	10.3	8	10.1	15	13.6	25,216	12.2
Minnesota	Boy	202	62.5	65,178	59.8	131	63.6	71	60.7	65,513	60
	Girl	121	37.5	43,763	40.2	75	36.4	46	39.3	43,763	40
	Age 0 to 4	6	2.1	5,901	6	4	2.4	2	1.7	3,066	2.8
	Age 5 to 9	59	20.6	32,266	32.6	36	21.3	23	19.7	41,462	37.9
	Age 10 to 14	116	40.6	27,210	27.5	62	36.7	54	46.2	31,996	29.3
	Age 15 to 17	105	36.7	33,658	34	67	39.6	38	32.5	32,753	30
	White only	217	68.9	62,380	58.6	131	65.2	86	75.4	82,055	77.8
	Black or African American only	37	11.7	27,351	25.7	26	12.9	11	9.6	15,995	15.2
	Other Races and Multiracial	61	19.4	16,702	15.7	44	21.9	17	14.9	7,410	7
Missouri	Boy	167	63.7	85,440	61	114	65.1	53	60.9	85,697	60.8
	Girl	95	36.3	54,635	39	61	34.9	34	39.1	55,181	39.2
	Age 0 to 4	22	9.1	17,345	13.4	18	11.3	4	4.9	10,128	7.2
	Age 5 to 9	57	23.6	27,845	21.5	38	23.8	19	23.2	27,790	19.7
	Age 10 to 14	92	38	53,485	41.3	63	39.4	29	35.4	57,127	40.5
	Age 15 to 17	71	29.3	30,985	23.9	41	25.6	30	36.6	46,176	32.7
	White only	201	76.1	79,500	57	134	76.1	67	76.1	71,070	50.3
	Black or African American only	30	11.4	41,697	29.9	19	10.8	11	12.5	61,108	43.3
	Other Races and Multiracial	33	12.5	18,358	13.2	23	13.1	10	11.4	9,043	6.4

Table 1B. Percentage of ACBS child (aged 0-17 years) respondents, non-respondents, and BRFSS-eligible asthma respondents by demographic groups and state/territory											
CHILDREN		BRFSS				ACBS		ACBS			
		Eligible Asthma Respondents				Non-Respondents		Respondents			
State	Demographics	Sample size (unweighted)	Percent (unweighted)	Weighted total	Percent (weighted)	Sample size (unweighted)	Percent (unweighted)	Sample size (unweighted)	Percent (unweighted)	Weighted total	Percent (weighted)
New York	Boy	135	55.8	214,485	57.4	43	50	92	59	214,871	58
	Girl	107	44.2	159,398	42.6	43	50	64	41	155,857	42
	Age 0 to 4	23	11.2	38,073	13.8	7	10.3	16	11.7	64,651	17.2
	Age 5 to 9	38	18.5	57,310	20.7	12	17.6	26	19	86,916	23.1
	Age 10 to 14	74	36.1	107,685	39	27	39.7	47	34.3	118,977	31.6
	Age 15 to 17	70	34.1	73,312	26.5	22	32.4	48	35	106,335	28.2
	White only	156	64.7	182,194	50.1	59	69.4	97	62.2	171,549	45.5
	Black or African American only	39	16.2	108,446	29.8	13	15.3	26	16.7	118,196	31.4
Other Races and Multiracial	46	19.1	73,304	20.1	13	15.3	33	21.2	87,133	23.1	
Texas	Boy	131	53.9	358,722	46.1	71	52.6	60	55.6	371,248	47
	Girl	112	46.1	419,018	53.9	64	47.4	48	44.4	419,018	53
	Age 0 to 4	14	6.6	45,587	7	6	5.3	8	8.2	80,222	10.1
	Age 5 to 9	57	27	220,016	33.7	30	26.3	27	27.8	244,513	30.8
	Age 10 to 14	77	36.5	207,744	31.9	46	40.4	31	32	254,391	32
	Age 15 to 17	63	29.9	178,745	27.4	32	28.1	31	32	215,535	27.1
	White only	142	58.2	416,631	53.4	69	51.5	73	66.4	616,916	77.6
	Black or African American only	44	18	166,467	21.3	28	20.9	16	14.5	59,056	7.4
Other Races and Multiracial	58	23.8	197,522	25.3	37	27.6	21	19.1	118,689	14.9	
Utah	Boy	196	59	47,766	63.1	148	61.7	48	52.2	47,857	63
	Girl	136	41	27,883	36.9	92	38.3	44	47.8	28,116	37
	Age 0 to 4	12	4.3	3,781	5.7	7	3.6	5	5.9	4,112	5.4
	Age 5 to 9	47	16.7	19,491	29.6	36	18.3	11	12.9	14,190	18.5
	Age 10 to 14	124	44	26,064	39.5	86	43.7	38	44.7	40,464	52.7
	Age 15 to 17	99	35.1	16,590	25.2	68	34.5	31	36.5	17,957	23.4
	White only	282	89.2	61,145	85.7	202	89	80	89.9	65,159	89.2
	Black or African American only	5	1.6	1,544	2.2	4	1.8	1	1.1	700	1
Other Races and Multiracial	29	9.2	8,651	12.1	21	9.3	8	9	7,177	9.8	

Table 1B. Percentage of ACBS child (aged 0-17 years) respondents, non-respondents, and BRFSS-eligible asthma respondents by demographic groups and state/territory											
CHILDREN		BRFSS				ACBS		ACBS			
		Eligible Asthma Respondents				Non-Respondents		Respondents			
State	Demographics	Sample size (unweighted)	Percent (unweighted)	Weighted total	Percent (weighted)	Sample size (unweighted)	Percent (unweighted)	Sample size (unweighted)	Percent (unweighted)	Weighted total	Percent (weighted)
Vermont	Boy	80	54.4	5,431	56.9	25	48.1	55	57.9	5,431	56.4
	Girl	67	45.6	4,115	43.1	27	51.9	40	42.1	4,196	43.6
	Age 0 to 4	9	6.7	970	10.8	2	4.5	7	7.8	1,240	12.7
	Age 5 to 9	29	21.6	2,714	30.3	14	31.8	15	16.7	2,802	28.8
	Age 10 to 14	47	35.1	3,084	34.5	9	20.5	38	42.2	3,311	34
	Age 15 to 17	49	36.6	2,182	24.4	19	43.2	30	33.3	2,387	24.5
	White only	138	91.4	8,565	87.9	46	85.2	92	94.8	9,389	96.4
	Other Races and Multiracial	12	7.9	1,153	11.8	7	13	5	5.2	350	3.6

Table 2A. Estimated percentage of current asthma status among adults (≥18 years) ever diagnosed with asthma by state/territory								
State	ACBS Respondents				BRFSS Eligible Asthma Respondents			
	ACBS Sample size	Current Prevalence (weighted percent)	Standard Error	CI ACBS	BRFSS Sample size	Current Prevalence (weighted percent)	Standard Error	CI BRFSS
States/areas total	13,225	68.6	1.03	(66.5 - 70.6)	37,032	68.4	0.58	(67.3 - 69.6)
Arizona	359	69.7	3.29	(62.9 - 75.8)	1,488	64.5	1.77	(61.0 - 67.9)
California	223	57	4.76	(47.6 - 66.0)	822	60.3	2.33	(55.7 - 64.8)
Connecticut	487	65.6	3.46	(58.6 - 72.1)	1,210	69.4	2	(65.3 - 73.2)
Florida	333	65.6	5.59	(54.0 - 75.6)	776	69.7	3.41	(62.6 - 75.9)
Georgia	335	67	3.93	(58.9 - 74.2)	999	67.7	2.39	(62.8 - 72.2)
Hawaii	242	68.7	4.59	(59.1 - 76.9)	992	59.9	2.2	(55.5 - 64.1)
Indiana	653	67.1	2.38	(62.3 - 71.6)	1,335	70	1.65	(66.6 - 73.1)
Iowa	385	72.8	3.18	(66.2 - 78.6)	1,051	72	1.88	(68.2 - 75.5)
Kansas	577	77.1	2.5	(71.9 - 81.7)	2,269	71.8	1.22	(69.4 - 74.2)
Kentucky	199	82.6	3.29	(75.2 - 88.2)	764	76	1.99	(71.9 - 79.7)
Maine	511	76.9	3.38	(69.6 - 82.9)	1,779	74.7	1.62	(71.5 - 77.8)
Maryland	514	63.8	3.25	(57.3 - 69.9)	2,059	66.7	1.59	(63.5 - 69.7)
Massachusetts	327	78.4	2.81	(72.4 - 83.4)	1,073	73.5	1.79	(69.9 - 76.9)
Michigan	694	71.8	2.38	(66.9 - 76.2)	1,288	73.1	1.7	(69.6 - 76.3)
Minnesota	673	71.4	2.23	(66.8 - 75.6)	1,891	70.6	1.3	(67.9 - 73.0)
Missouri	477	70.4	3.52	(63.1 - 76.9)	1,475	70.7	1.86	(66.9 - 74.2)
Montana	210	74.4	4.04	(65.8 - 81.5)	819	68.4	2.14	(64.1 - 72.4)
Nebraska	481	73.8	3.17	(67.1 - 79.5)	1,501	72.1	1.74	(68.6 - 75.4)
New Hampshire	538	72.4	3.04	(66.1 - 78.0)	962	72.2	2.2	(67.7 - 76.3)
New Jersey	435	65.1	3.14	(58.7 - 71.0)	943	69.9	2.21	(65.4 - 74.0)
New Mexico	270	73.6	4.12	(64.8 - 80.9)	858	76.9	2.06	(72.6 - 80.7)
New York	836	68.2	3.2	(61.6 - 74.1)	1,796	73.7	2.03	(69.5 - 77.5)
Ohio	538	69.6	2.79	(63.9 - 74.8)	1,896	69.1	1.57	(66.0 - 72.1)
Oregon	296	76.7	2.98	(70.4 - 82.0)	791	70.2	2	(66.1 - 73.9)
Pennsylvania	241	73	3.54	(65.5 - 79.4)	857	69.7	2.09	(65.4 - 73.6)
Rhode Island	472	73.9	2.71	(68.2 - 78.8)	884	74.3	2.08	(70.0 - 78.2)
Texas	500	72	3.15	(65.5 - 77.8)	1,273	68.1	2.21	(63.6 - 72.3)
Utah	485	70.9	2.87	(65.0 - 76.2)	1,421	68.8	1.58	(65.7 - 71.9)
Vermont	551	67.6	2.8	(61.9 - 72.8)	977	70.4	2.04	(66.3 - 74.2)
Wisconsin	383	75.8	3.04	(69.4 - 81.3)	783	72.9	2.37	(68.1 - 77.3)

Table 2B. Estimated percentage of current asthma status among children (0-17 years) ever diagnosed with asthma by state/territory								
Child	ACBS Respondents				BRFSS Eligible Asthma Respondents			
State	ACBS Sample size	Current Prevalence (weighted percent)	Standard Error	CI ACBS	BRFSS Sample size	Current Prevalence (weighted percent)	Standard Error	CI BRFSS
States/areas total	689	57.8	4.91	(47.9 - 67.0)	1,907	63.2	3.31	(56.5 - 69.4)
Connecticut	119	68.3	7.86	(51.4 - 81.5)	308	67.2	5.02	(56.8 - 76.2)
Georgia	77	57.6	7.87	(41.9 - 71.9)	268	59.9	5.27	(49.3 - 69.7)
Minnesota	76	54.2	7.98	(38.7 - 69.0)	296	64.6	4.01	(56.4 - 72.0)
New Jersey	117	58.4	5.74	(46.8 - 69.0)	272	67.3	4.55	(57.8 - 75.5)
Texas	134	55.6	9.29	(37.4 - 72.4)	306	62.1	6.34	(49.1 - 73.5)
Utah	82	66.9	7.21	(51.6 - 79.3)	305	72.0	3.39	(64.9 - 78.1)
Vermont	84	51.3	6.86	(38.0 - 64.3)	152	64.7	5.18	(54.0 - 74.1)
Notes:								
This table only contains states included in the public-release file								